

Style SW2000
(5% open)



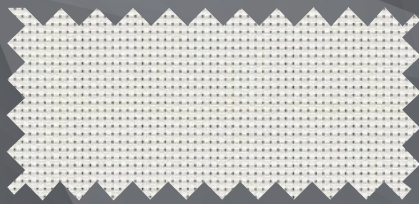
P04 White / Bone

Style SW2100
(10% open)

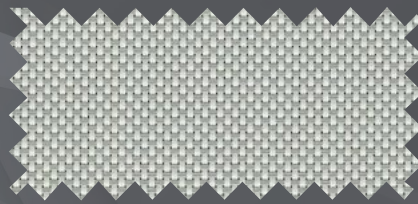


P04 White / Bone

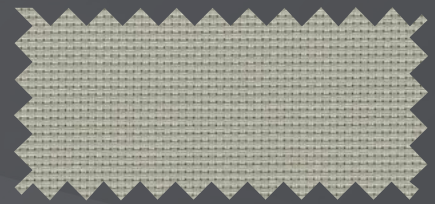
The above styles are also available in the colors shown below.



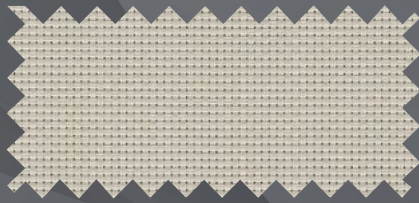
P02 White



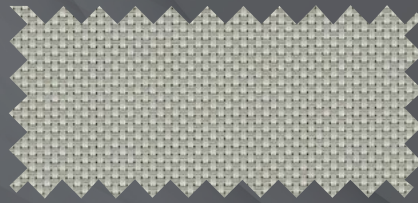
P05 White / Platinum



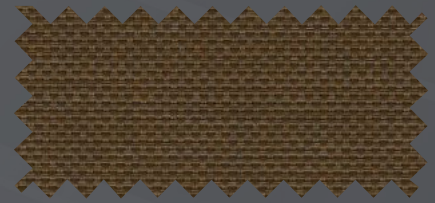
V04 Platinum



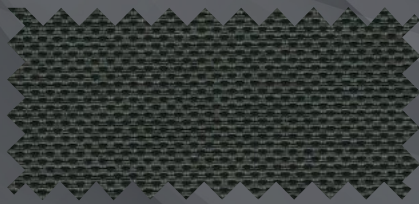
Q05 Bone



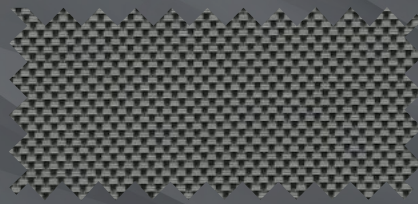
Q06 Bone / Platinum



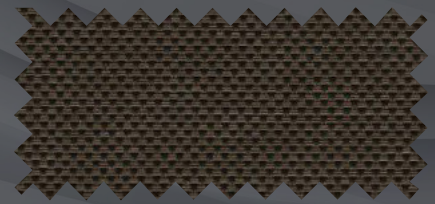
Q10 Bronze



V21 Charcoal



V22 Charcoal / Gray



V24 Charcoal / Chestnut

SheerWeave® Style SW2000 / 2100

The original SheerWeave® fabrics, Styles 2000 and 2100, are vinyl-coated fiberglass basketweaves designed expressly for those applications that require a more opaque and non-directional fabric. Styles 2000 and 2100 can also be used in exterior shades.

SHEERWEAVE STYLE SW2000 / 2100

STANDARD WIDTH	SW2000: 63", 98" and 126" (160 cm, 248.9 cm and 320 cm) SW2100: 63", 98" and 126" (160 cm, 248.9 cm and 320 cm)	FABRIC THICKNESS	SW2000: 0.021 in (0.53 mm) SW2100: 0.021 in (0.53 mm)
ROLL LENGTH	30 Linear Yards (27.4 lm)	OPENNESS FACTOR	SW2000: Approximately 5% SW2100: Approximately 10%
COMPOSITION	37% Fiberglass, 63% Vinyl on Fiberglass	UV BLOCKAGE	SW2000: Approximately 95% SW2100: Approximately 90%
MESH WEIGHT	SW2000: 14.4 oz/yd ² (488 g/m ²) SW2100: 12.9 oz/yd ² (437 g/m ²)	ACOUSTICAL VALUE	SW2000: NRC 0.10/SAA 0.11 SW2100: NRC 0.05/SAA 0.06
		ACOUSTICAL PERFORMANCE	NRC (Noise Reduction Coefficient) and SAA (Sound Absorption Average) tested in accordance with ASTM C423-09a.

SPECIFICATIONS

FIRE CLASSIFICATION	California U.S. Title 19 (small scale), NFPA 701 TM#1 (small scale), NFPA 101 (Class A Rating), IBC Section 803.1.1 (Class A Rating), BS 5867 Part 2 Type B Performance, NFPA 701 TM#2 (large scale), CAN/ULC-S 109 (large and small scale), CAN/CGSB2-4.162-M80.
BACTERIA AND FUNGAL RESISTANCE	ASTM E 2180, ASTM G21, ASTM G22, AATCC30 Part 3, ASTM D 3273, GREENGUARD Mold and Bacteria Standard ASTM 6329; includes Microban antimicrobial additives.
ENVIRONMENTAL CERTIFICATION	Certified to GREENGUARD and GREENGUARD Gold standards for low chemical emissions into indoor air during product usage.
SAFE USE	RoHS/Directive 2002/95/EC, US Consumer Product Safety Commission Section 101, ANSI/WCMA A 100.1-2007 for lead content and REACH (EC 1907/2006) compliant.
STANDARD USES	Roller shades and panel tracks.
WARRANTY	10-year interior, 5-year exterior.

TECHNICAL DATA

		SOLAR OPTICAL PROPERTIES								SHGC/G VALUE g-tot (glass & blind)			
		TS%		RS%		AS%		TV%		Single 1/4 CL		Insulating 1 HA	
	OPENNESS	5%	10%	5%	10%	5%	10%	5%	10%	5%	10%	5%	10%
COLOR	NUMBER												
White	P02	20	22	67	60	13	18	16	16	0.30	0.34	0.28	0.30
White / Bone	P04	18	19	61	54	21	27	13	14	0.32	0.37	0.30	0.31
White / Platinum	P05	13	16	49	47	38	37	11	12	0.38	0.40	0.32	0.33
Bone	Q05	18	19	55	44	27	37	12	15	0.36	0.42	0.31	0.35
Bone / Platinum	Q06	12	16	43	38	45	46	10	14	0.41	0.44	0.34	0.36
Bronze	Q10	5	8	7	5	88	87	6	9	0.59	0.61	0.44	0.44
Platinum	V04	10	10	35	31	55	59	9	9	0.45	0.47	0.37	0.37
Charcoal	V21	6	9	4	4	90	87	6	10	0.61	0.62	0.44	0.44
Charcoal / Gray	V22	7	11	9	8	84	81	7	12	0.58	0.60	0.44	0.44
Charcoal / Chestnut	V24	6	11	7	6	87	83	6	12	0.59	0.61	0.44	0.44



PRODUCT CERTIFIED FOR LOW CHEMICAL EMISSIONS
UL COM/GG
UL 2818



MIF Seal of Approval



411 S. Pearl St. | Spiceland, IN 47385
765.987.7999 | 800.238.7999
draperinc.com

SW2000 ●●●●●○○○ **SW2100** ●●●●●○○○

*TS - Solar Transmittance, RS - Solar Reflectance, AS - Solar Absorptance, TV - Visual Transmittance *SHGC = Solar Heat Gain Coefficient *1/4 CL = 1/4" Clear Glass, 1 HA = 1" Heat Absorbing Glass *Fabrics Installed Internally, Zero-Degree Profile Angle *Solar Heat Gain Coefficient (SHGC) shown calculated according to Office of Building Technology, State and Community Programs, Energy Efficiency and Renewable Energy, U.S. Department of Energy's definition of SHGC. SHGC represents the percentage of solar heat gain that is transmitted to the interior through the glass and shading system. If you are using glass whose performance is listed in terms of SC, you may convert to SHGC by multiplying the SC by 0.87.



© SheerWeave is a registered trademark of PHIFER INCORPORATED.
© MICROBAN is a registered trademark of Microban Products Company.
TM UL, the UL logos and the UL mark are trademarks of UL LLC.
© PHIFER INCORPORATED V18 3027402 621