



3% open interior
solar protection

Color / Alu



Light grey/ Alu

99-2058

Color / Color



Light grey / Light grey

99-2011



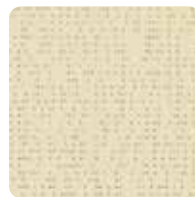
Quartz / Alu 99-50285



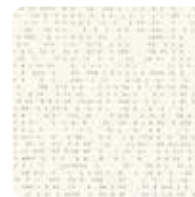
White / Alu 99-2055



Anthracite/Alu 99-2068



Quartz 99-50303



White 99-2044



Anthracite 99-2047

Additional Colors Available

The colors and textures represented in this document are provided as a reference only.

Soltis

Master 99

Applications:

Interior roller window shades, skylight shades, sliding panels



■ Glare & heat protection

Maximum comfort while maintaining outward visibility

■ Durable & sustainable

Long term durability and dimensional stability thanks to Preconstraint® technology, and recyclable

■ Beautiful design

Lightweight & thin, will not fray, flat surface for easy cleaning

■ Technical properties

		Standards
Openness factor	3%	
Weight	8.6 oz/sqyd	EN ISO 2286-2
Width*	69.6 / 105.1 in	
Standard length	69.6 in: 54.6 yds / 105.1 in: 43.7 yds	

■ Physical properties

Tensile strength (warp/weft)	160/170 daN/5 cm	EN ISO 1421
Tear strength (warp/weft)	11/13 daN	DIN 53.363

■ Flame retardancy

Rating	Method 1&2 / NFPA 701 — CSFMT19 — Class A / ASTM E84 — CAN ULCS109	
--------	---	--

■ Management systems

Quality	ISO 9001	
---------	----------	--

■ Certifications, warranties, recycling



**Preconstraint®
Technology**

**5 year
warranty**

■ Complete color range / stock position

Color / Alu	Rapid Stock		Color / Alu	Rapid Stock		Color / Alu	Rapid Stock		Color / Alu	Rapid Stock		Color / Color	Rapid Stock		Color / Color	Rapid Stock	
	69.6"	105"		69.6"	105"		69.6"	105"		69.6"	105"		69.6"	105"		69.6"	105"
99-2055		• •	99-50285		• •	99-50291			99-50296			99-2011			99-50303		• •
99-2058		• •	99-50286			99-50292			99-50297			99-2044		• •	99-50305		
99-2059		•	99-50287			99-50293			99-50298			99-2047		•			
99-2068		• •	99-50288		•	99-50294			99-50299			99-50265					
99-2073			99-50289			99-50295			99-50300			99-50301					
99-50284			99-50290												Color / White		
														99-2115			

The colors and textures represented in this document are provided as a reference only.

*Not all colors available in all widths

The technical data above are average values with a +/- 5% tolerance.

The buyer of our products is fully responsible for their application or their transformation concerning any possible third party. The buyer of our products is responsible for their implementation and installation in compliance with standards, codes of practice and safety regulations in force in destination countries.

To ensure warranty effectiveness, refer to applicable certificate, available on demand.

The values quoted above represent results of tests performed in compliance with common design practices and are provided for information only to enable customers to make the best use of our products. Our products are subject to changes prompted by technological developments. We reserve the right to modify their characteristics at any time. The buyer of our products is responsible for checking the validity of the above data.