

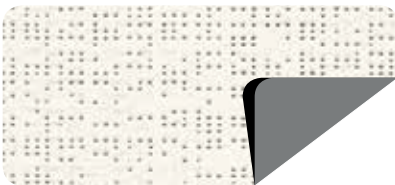
Blackout, Comfort  
and Durability

Indoor & outdoor applications



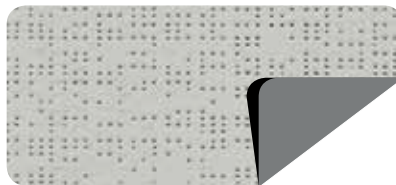
**Bronze** 66.9 in

B92-1043



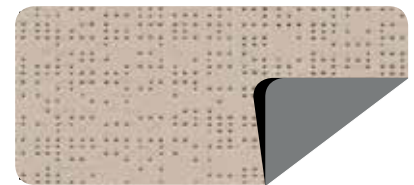
**White** 66.9 in

B92-1044



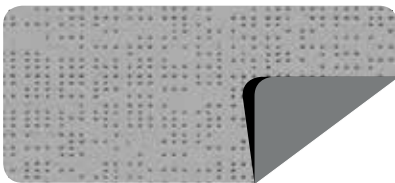
**Boulder** 66.9 in

B92-2171



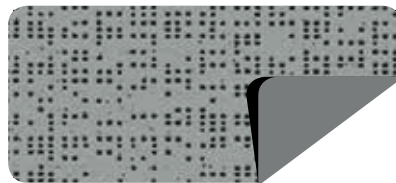
**Sandy beige** 66.9 in

B92-2135



**Alu** 66.9 in

B92-1046



**Beaten metal** 66.9 in

B92-1045



**Bronze** 66.9 in

B92-1043

■ **Technical properties**

Weight	19.1 oz/yd <sup>2</sup>
Thickness	0.60 mm
Width	66.9 in

■ **Length of rolls**

Standard length	43.7 yds
-----------------	----------

■ **Physical properties**

Tensile strength (warp/weft)	330/220 daN/5 cm
Tear strength (warp/weft)	45/25 daN

■ **Flame retardancy**

Rating	<b>Method 1 and 2/</b> NFPA 701 <b>Class A</b> / ASTM E 84 <b>B1</b> /DIN 4102-1 <b>Schwerbrennbar-</b> <b>Q1-Tr1</b> /ONORM A 3800-1 <b>Class 2</b> /UNI 9177-87 <b>VKF 5.2</b> /SN 198898 BS 5867
--------	---

Euroclass	<b>B-s2,d0</b>
-----------	----------------

■ **Management systems**

Quality	
---------	--

■ **Certifications, labels, warranties, recycling**



(Except B702)



With **S+** Serge Ferrari goes further than the standards.  
(Consult us for further information.)

■ **Tools and services**

- Personalized service for simulating your project's thermal performance and related Soltis solar protection systems: please contact your Serge Ferrari representative
- Tool for evaluating energy savings generated by Soltis solar protection systems: [www.textinergie.org](http://www.textinergie.org)
- Document and photo libraries: [www.sergeferrari.com](http://www.sergeferrari.com)



Inside photos: Silo Hotel, Cap Town, South Africa - Architects: Heatherwick Studios,  
©Wianelle Photography - Latvian museum of art, Riga, Latvia

The above technical data represent average values subject to a +/-5% tolerance.

The buyer of our products is fully responsible for their application or their transformation concerning any possible third party. The buyer of our products is responsible for their implementation and installation in compliance with standards, codes of practice and safety regulations in force in destination countries. For information on our contractual warranty, please refer to the relevant terms and conditions.

The values quoted above represent results of tests performed in compliance with common design practices and are provided for information only to enable customers to make the best use of our products. Our products are subjects to evolutions due to technical progress, we remain entitled to modify the characteristics of our products at any time. The buyer of our products is responsible for checking the validity of the above data.