

Dual Roller FlexShade® NEXD

Premium, clutch-operated, dual roller window shade

SUBMITTAL

TECHNICAL INFO

FLEXSHADE DFXD Please check all appropriate selections and attach room schedule with verified dimensions.

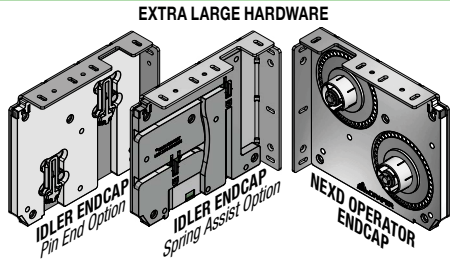
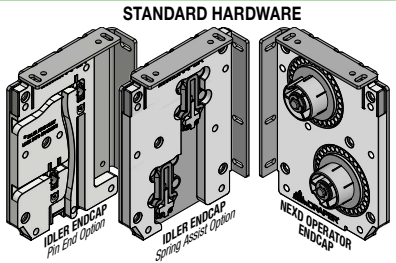
This document is to be used with the [Small/Large NEXD Submittal](#). On the diagram below, please provide the following information:

Rear Roller Fabric: _____ Color / Number: _____ Openness Factor: _____
*Please see the Shade Fabric Reference Guide for fabric colors and specifications.
Front Roller Fabric: _____ Color / Number: _____ Openness Factor: _____
*Please see the Shade Fabric Reference Guide for fabric colors and specifications.

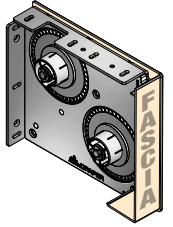
Please Note: Shade fabrics can be placed anywhere in the headbox. Fabric or screen can be no closer than 13/16" (21mm) to either end of the headbox.

Select Dual Roller Hardware (All Hardware Dimensions available on page 2.)

- Hardware Size**
- Standard Hardware
 - Extra Large Hardware

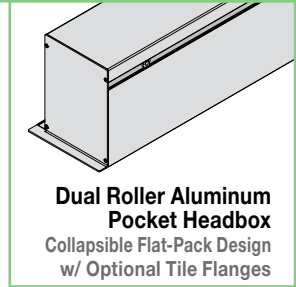


- Endcaps & Fascia**
- Dual Endcaps ONLY
 - Dual Endcaps with Fascia



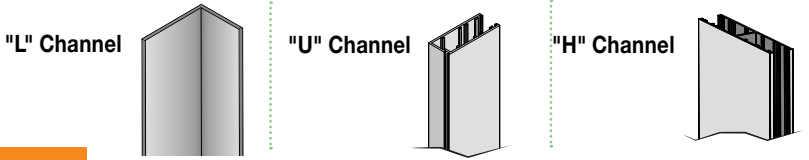
Select Headbox (Optional)

- Surface Headbox (standard or extra large; sizes chosen by Draper)
- Pocket Headbox (standard or extra large; sizes chosen by Draper)
 - Dual Roller Aluminum Pocket Headbox
 - Tile Flange: Front (standard) Back Left Right None
 - Dual Roller Steel Pocket Headbox
 - Tile Flange: Front (standard) Back Left Right None
- Dual Pocket Headbox Ventilation Holes: Yes No (standard)
- Pre-Drilled Shade Endcap Mounting Holes: Yes (standard) No
- Pre-Drilled Pocket Headbox Mounting Holes: Yes No (standard)
- Custom Headbox (contact Draper)



Select Channels for Light Gap Reduction (Optional)

- "L" Angle
- "U" Channel
- "H" Channel
- Channel Liners



Child Safety Information

To comply with Child Safety Standard ANSI/WCMA A100.1-2022, this product ships with a tensioning device attached to the bead chain. Incorrect installation partially disables the product. When properly fastened to mounting surface, the pre-installed Tensioned Hold Down device for clutch-operated units prevents creation of a hazardous loop by maintaining tension on the bead chain.

Scan for more information, including short videos on correctly installing the tensioning device, or go to draperinc.com/windowshades/childsafety.

Select Hardware Finish

- Clear Anodized (standard)
- Black
- Ivory
- White
- Bronze
- Custom (Contact Draper®)

PROJECT: _____

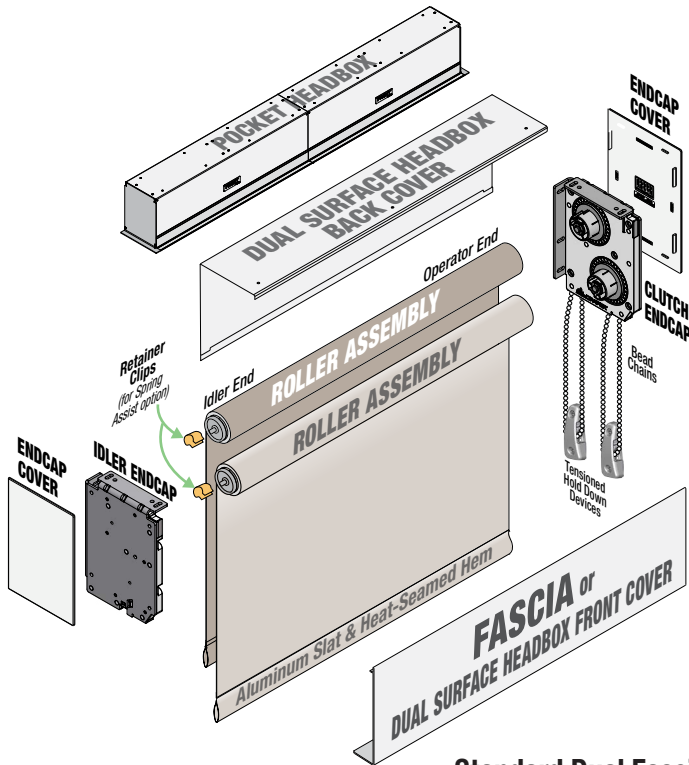
ARCHITECT: _____

CONTRACTOR: _____

SUPPLIER: _____

DATE: _____ **REVISED:** _____

Standard Hardware Components



DUAL ROLLER STANDARD HARDWARE FLEXSHADE NEXD SPECIFICATIONS:

Two rollers mounted to a single set of endcaps, to accept fascia.

COMPONENTS SPECIFIC TO CLUTCH-OPERATED DUAL ROLLER

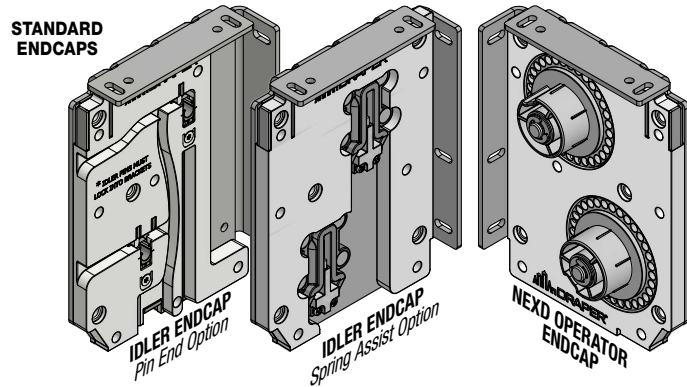
ENDCAPS: 1028 steel stamping. Complete with adapter roller bracket. Installs to wall or ceiling. Shades mount in vertical configuration (see drawings). Accepts Dual Roller Fascia.

DUAL FASCIA (FOR ENDCAPS): L-shaped cover of extruded aluminum, .060" (1.5mm) wall. Assembly snaps onto endcaps without exposed fasteners. Clear Anodized (standard), black, white, ivory, or bronze powder coat finish available.

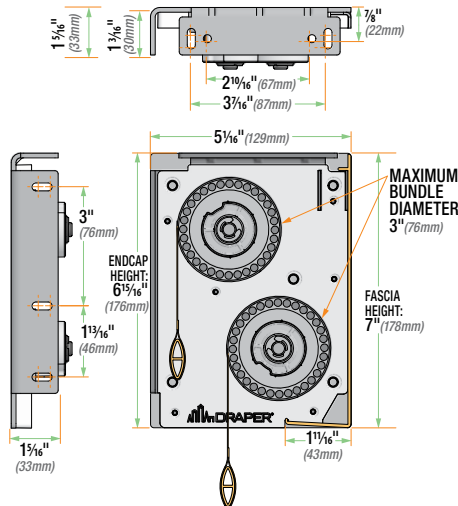
DUAL ROLLER POCKET STYLE HEADBOX: Headbox of 18 GA Steel, painted white on bottom and front, with or without aluminum ceiling tile lip. Removable aluminum bottom closure attaches without exposed fasteners.

Downloadable 3-part specifications are available at www.draperinc.com

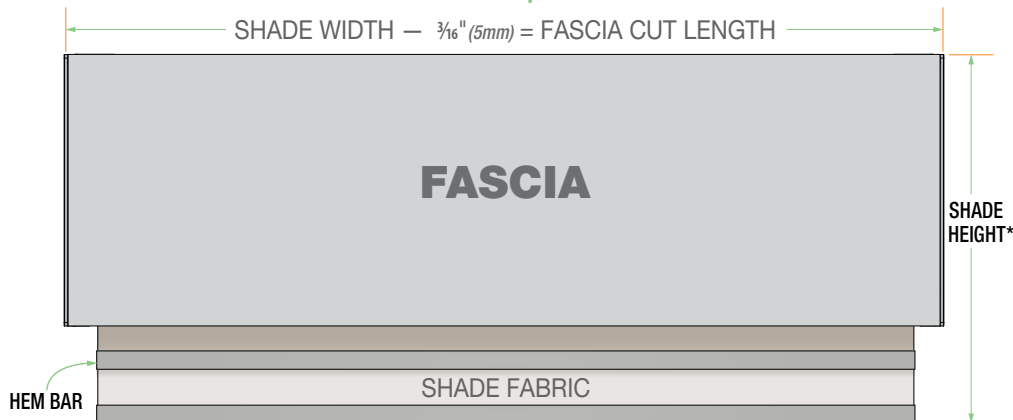
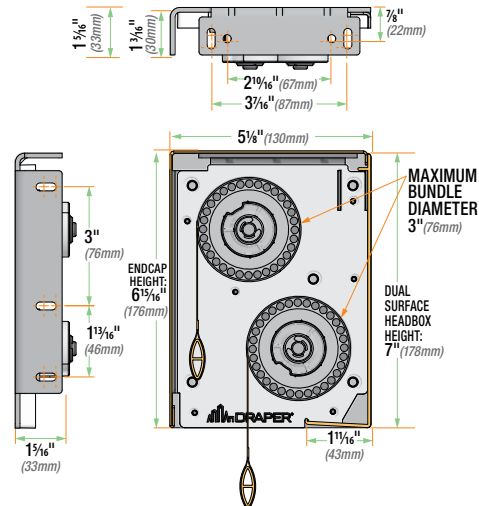
Please note: Dimensions of rollers, operators, and hardware at manufacturer's discretion.



Standard Dual Fascia



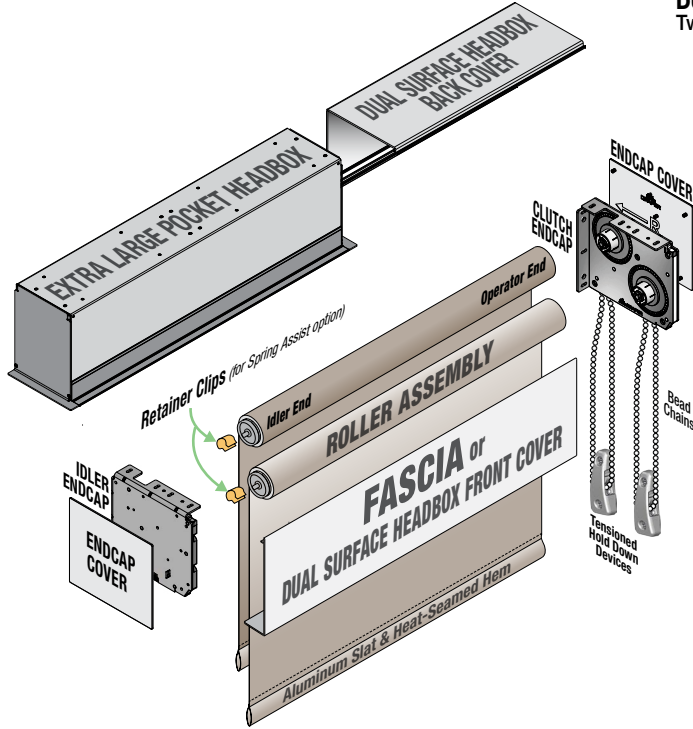
Standard Dual Surface Headbox



ROLLER TUBE CUT LENGTH - 1/8" (3.2mm) = FABRIC CUT WIDTH
 SHADE WIDTH (Outside Measurement) - 1 1/2" (38mm) = ROLLER TUBE CUT LENGTH
 FABRIC CUT WIDTH - 2" (51mm) = HEM BAR CUT LENGTH

*When measuring shade height, remember to include Endcaps & Fascia.

Extra Large Hardware Components



DUAL ROLLER EXTRA LARGE HARDWARE FLEXSHADE NEXD SPECIFICATIONS:
Two rollers mounted to a single set of endcaps, to accept fascia.

COMPONENTS SPECIFIC TO CLUTCH-OPERATED DUAL ROLLER

ENDCAPS: 1028 steel stamping. Complete with adapter roller bracket. Installs to wall or ceiling. Shades mount in vertical configuration (see drawings). Accepts Dual Roller Fascia.

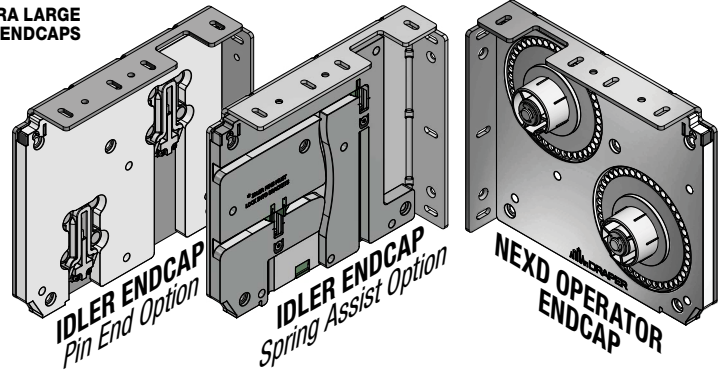
DUAL FASCIA (FOR ENDCAPS): L-shaped cover of extruded aluminum, .060" (1.5mm) wall. Assembly snaps onto endcaps without exposed fasteners. Clear Anodized (standard), black, white, ivory, or bronze powder coat finish available.

DUAL ROLLER POCKET STYLE HEADBOX: Headbox of 18 GA Steel, painted white on bottom and front, with or without aluminum ceiling tile lip. Removable aluminum bottom closure attaches without exposed fasteners.

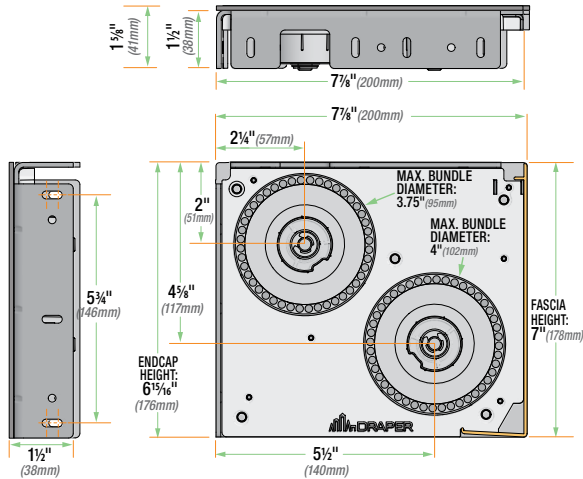
Downloadable 3-part specifications are available at www.draperinc.com

Please note: Dimensions of rollers, operators, and hardware at manufacturer's discretion.

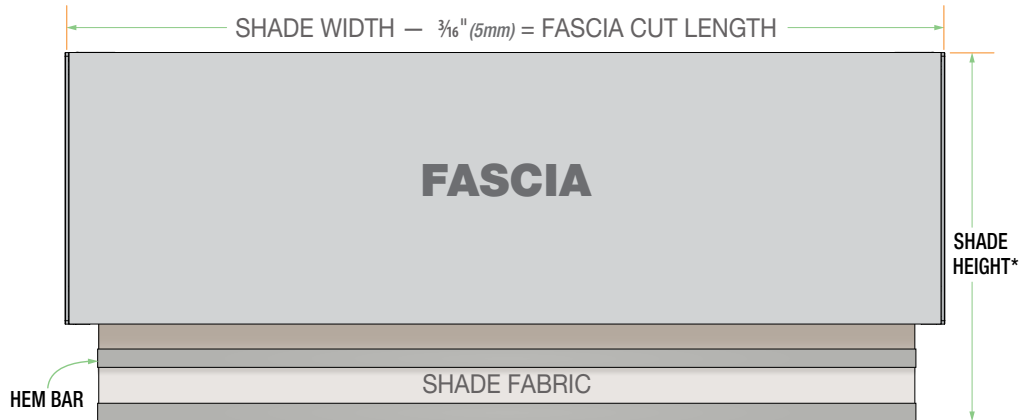
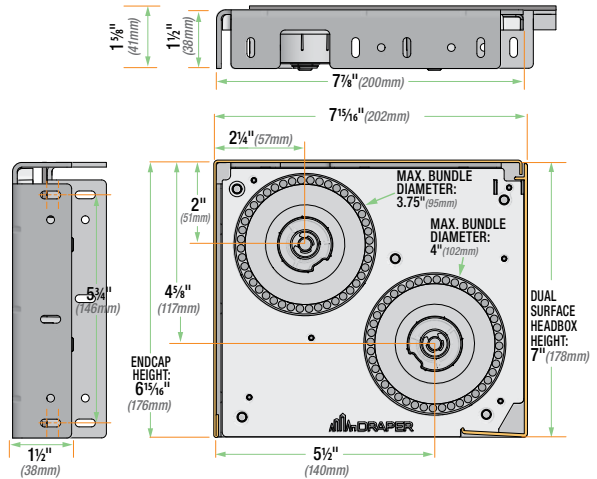
EXTRA LARGE ENDCAPS



Extra Large Dual Fascia



Extra Large Dual Surface Headbox

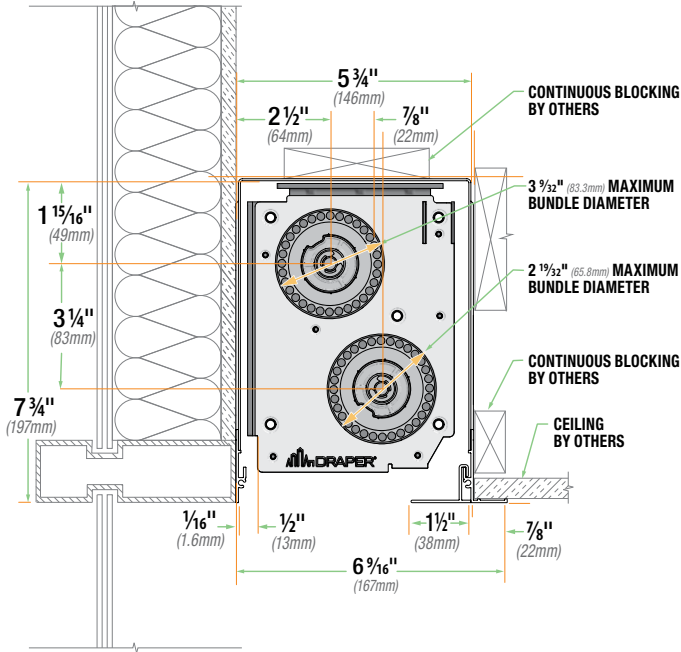


ROLLER TUBE CUT LENGTH - 1/8" (3.2mm) = FABRIC CUT WIDTH
 SHADE WIDTH (Outside Measurement) - 1 1/2" (38mm) = ROLLER TUBE CUT LENGTH
 FABRIC CUT WIDTH - 2" (51mm) = HEM BAR CUT LENGTH

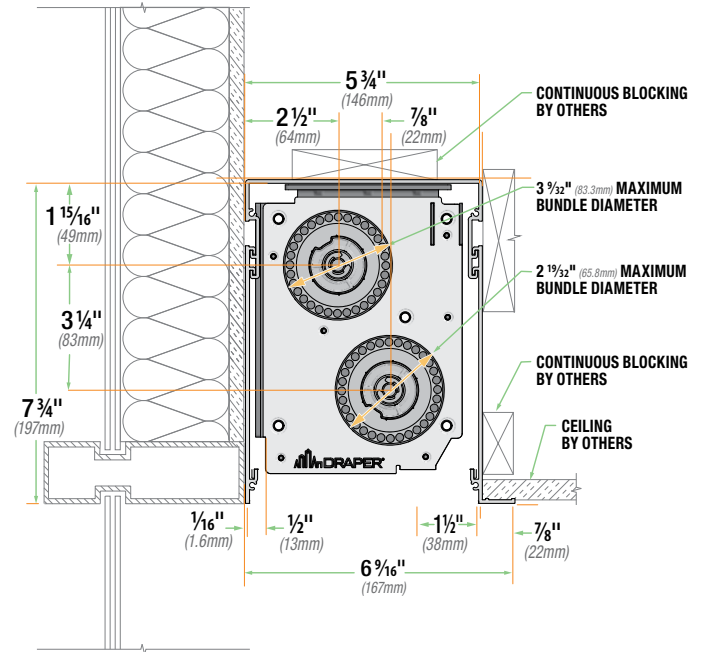
*When measuring shade height, remember to include Endcaps & Fascia.

Dimensions: Pocket Headbox

Standard Hardware Steel Pocket Headbox



Standard Hardware Aluminum Pocket Headbox



Extra Large Hardware

