

Installation/Operating Instructions Ultimate Access FlexShade by Draper

⚠ Caution

- ① Read instructions through completely before proceeding.
- ② Follow instructions carefully. Installation contrary to instructions invalidates warranty.
- ③ Entire bottom of headbox should be unobstructed to permit access to bottom panel for electrical connections or servicing.
- ④ Headbox should be installed level (using a carpenter's level).
- ⑤ Nothing should be fastened to shade dowel or shade fabric.
- ⑥ Shade operates on 110-120V, 60 Hz. current.

NOTE: Unit has been thoroughly inspected and tested at factory and found to be operating properly prior to shipment.

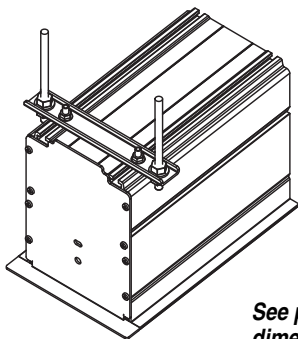
Headbox Installation

Suspended Installation—

- ① Position brackets at a 45° angle on the top of the rear housing, then rotate into place in the grooves provided (see Fig. 1).
- ② Locate bracket as required for threaded rod, chain or cable, and tighten set screws to hold bracket in place.

Slots along top of case permit brackets to be set at an angle

Typical Installation



See page 2 two dimensions.

Alternate Installation (additional set of brackets required but not included)

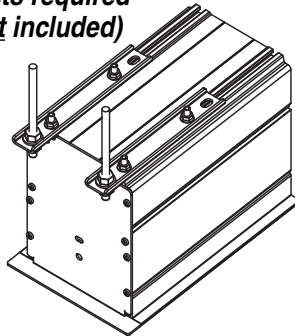
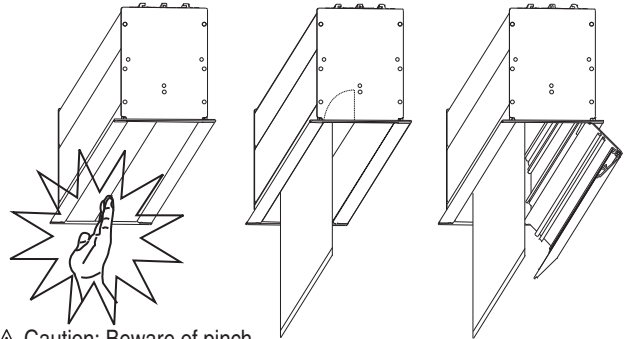


Figure 1

Ceiling (Surface) Installation—

- ① Open bottom access panel. A spring latch at each end of the trap door holds this assembly closed. In some shades there may also be a spring latch near the center of the case. To gain access to inside of case, disengage spring latch at each end of the case (and near the center of the case, if applicable) by sliding the latch lever towards the center of case, then pull down slightly on the trap door assembly. The latch levers are somewhat concealed from view. Locate these with the trap door open by feeling for the vertical latch lever above the door about 3" from case endcaps and near the center of the case. The assembly will swing down, opening about 135°. Pivot the prop arms at each end of the trap door assembly towards the ends of case. Prop arms engage with a hole in each endcap to hold the trap door assembly fully open. To close the trap door assembly disengage prop arms from endcaps and pivot these over the access panel. Swing the trap door assembly upward, stopping just before the latch levers hit the bottom flanges of the endcaps (and center of case where appropriate). Pull levers of latches towards center of screen case to allow the trap door assembly to be pivoted to its closed position. Make sure that the spring latch levers engage fully with case endcaps (and center of case where appropriate).



⚠ Caution: Beware of pinch points along closure

- ② Drill holes through the top of the rear housing as required (see Fig. 2).
- ③ Position housing against ceiling and transfer mounting hole locations.
- ④ Install appropriate anchors.
- ⑤ Mount housing to ceiling.

Shade Assembly

Note: Roller mounting brackets are factory installed in the housing.

- ① Compress and insert spring loaded pin end into its bracket.
- ② Insert operator end into bracket (see Fig. 3).
- ③ Plug shade into junction box.

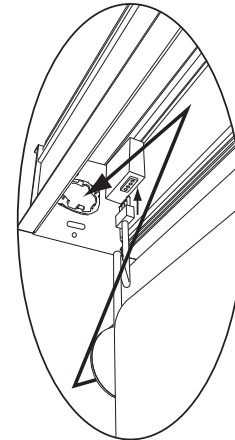


Figure 3

Electrical Connections

Screen operates on 110-120V, 60 Hz. current.

Junction box is located in the upper left corner of the headbox.

Open the access panel/trap door for access to the junction box cover. (See bottom access panel/trap door opening and closing instructions under "Ceiling (Surface) Installation".)

Remove two (2) hex head screws that secure the cover to the junction box to expose the red, black, and white pigtail leads and the green ground wire per wiring diagram on back page.

Shade is shipped with internal wiring complete and control switch(es) fully boxed. Wire to connect shade to switch(es) and switch(es) to power supply should be furnished by installer. Connections should be made in accordance with attached wiring diagram, and wiring should comply with national and local electrical codes.

All operating switches should be "off" before power is connected.

Please Note: For low voltage wiring requirements, Draper recommends consulting with a professional low voltage electrical contractor. It is very important that shielded and stranded CAT 5 cable be used to prevent any electrical interference.

Field Adjustments

Each Draper Solar Control Shade is tested to ensure proper operation. Even with this testing, some field adjustments may be needed for telescoping. If the shade is telescoping, place a piece of high quality gaffer tape about 1" wide on the exposed roller (where the fabric will cover it) on the side that you want the fabric drawn toward. For example: if the fabric is tracking to the left, place the tape on the right side.

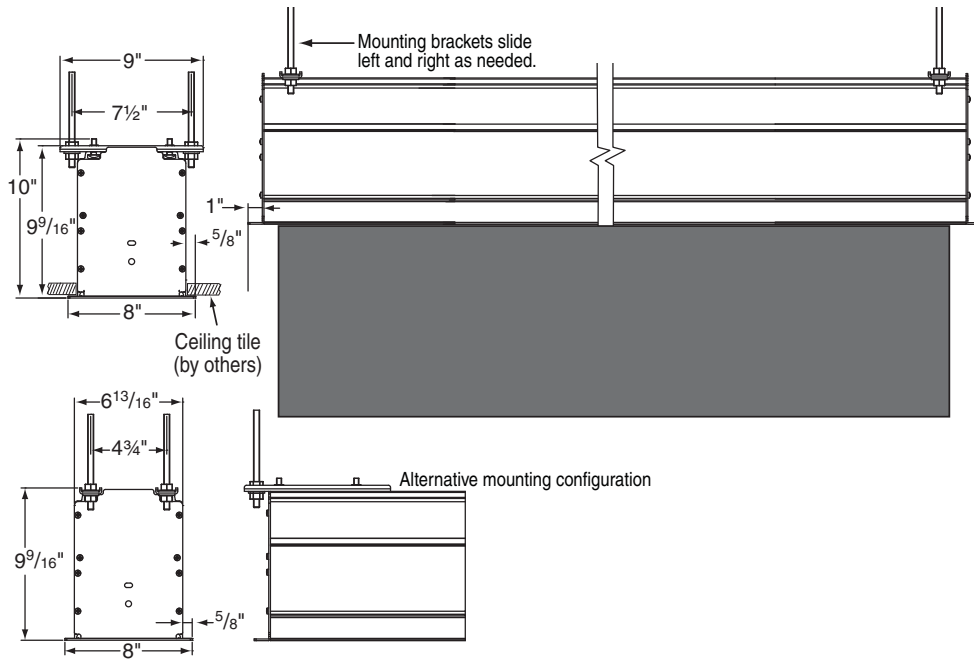
If you encounter any difficulties installing or servicing your Ultimate Access FlexShade, call your dealer or Draper, Inc., in Spiceland, Indiana, 765/987-7999 or fax 765/987-7142.

DRAPER®

411 S. Pearl St., Spiceland, IN 47385 USA ■ 765-987-7999
www.draperinc.com ■ fax 765-987-7142

Copyright © 2010 Draper Inc. Form UltimateAccessFlexShade_Inst10-R Printed in U.S.A.

Case Dimensions



Limit Switch Adjustments

⚠CAUTION: Be sure all switches are in “off” position before adjusting limit switches. Always be prepared to shut off manually when new adjustment is being tested. **Do not allow the shade roller to become exposed by running the shade fabric too far down.** Shade may be severely damaged if allowed to run too far up or down. **Each shade’s limit switch must be set if using group control system. Motor should be installed so limit switches are pointed down or accessible.**

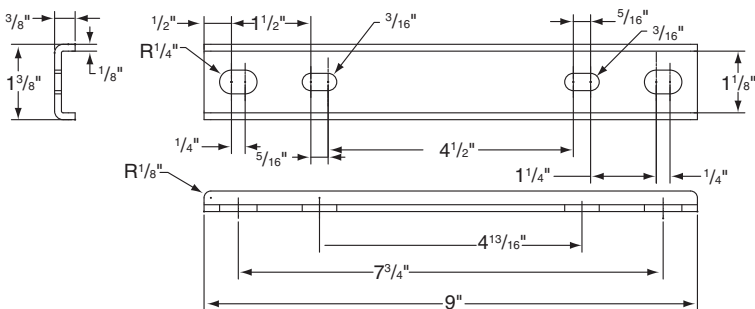
Push Button Limits

- ① Fully depress both limit switch push buttons, then operate wall switch to make sure system works properly.
- ② Raise shade to desired “up” stop position.
- ③ Set upper limit by depressing and releasing the proper (back) push button.
- ④ Lower shade to desired “down” stop position.
- ⑤ Set lower limit by depressing and releasing the proper (front) push button.

Screw-Type Limits

- ① Determine which direction of fabric travel corresponds with arrows on motor.
- ② Operate shade to desired “down” stop position. Set limit by turning the proper socket toward the “+” to lower the limit, and “-” to raise it.
- ③ Operate shade to desired “up” stopping position. Set limit by turning the proper screw toward the “-” to raise the limit, and “+” to lower it.

Mounting Bracket Dimensions

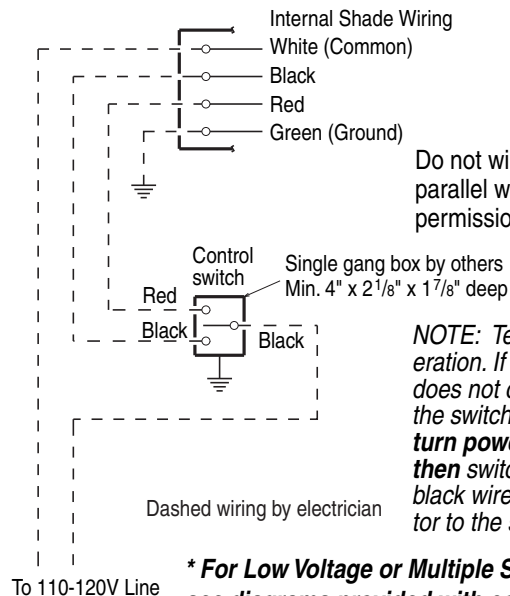


Cleaning and Maintenance

Idlers on motorized shades may occasionally need lubrication. If lubrication is required, apply a small amount of a lithium based grease direct to the idler pin.

Most of Draper’s standard fabrics may be cleaned at the window by vacuuming with a soft brush attachment. They may also be cleaned by using a sponge or soft cloth and mild solution of warm soapy water. A dishwashing liquid, such as Ivory liquid, is recommended. A clean dry cloth is recommended for the metal finish. **Exceptions are Flocké, Roc-Rol and Phifer SW7000 fabrics, which must be cleaned with a dry art sponge.**

Wiring Diagram—Single Station Control *



Do not wire motors in parallel without written permission from Draper.

NOTE: Test shade operation. If shade direction does not correspond with the switch orientation, **turn power back off then switch the red and black wires from the motor to the switch.**

*** For Low Voltage or Multiple Station Control, see diagrams provided with control.**