

Installation Instructions

IntelliFlex™ PSI60 Bus Command Converter by Draper

- ① Make sure power is disconnected before installing controls.
- ② Make sure AC Amperage of any wall switches are not exceeded, and that wires are large enough for loads.
- ③ All AC motor controls are UL approved.

Installing the PSI60

- ① Connect the PSI60 to the SC1 network (see Fig. 1).

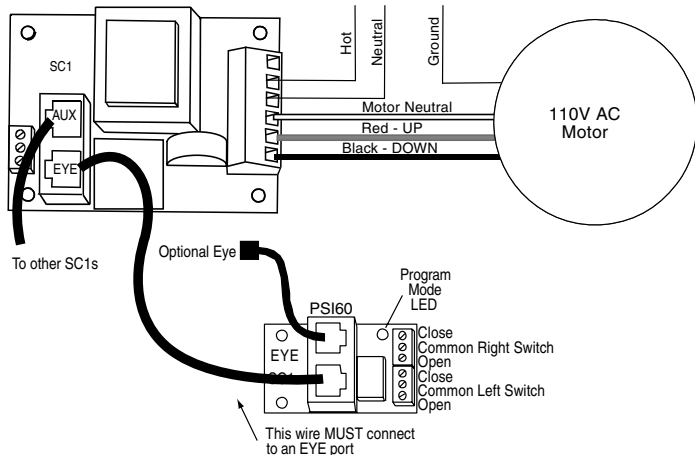


Figure 1

General installation guidelines based on type of switch

SPDT Momentary Switch or Somfy 3-Button Switch:

SC1 control will be programmed to SPDT Momentary by factory default (SPDT Momentary Switch). Button action is exactly like the keypad. A momentary press of either directional button sends the appropriate command. The motor action will be maintained, running the shade to its limit. If the command is repeated, this will “stop” the motor at that point in its travel.

SPDT Maintained Switch:

Program SC1 to “Stop on Manual Button Release.” A standard SPST maintained switch will now operate the SC1 control just like normal AC switching. Press “Down,” latching the switch down = the shade runs down. Action of “Up” is the same. Return switch to center = “Stop.”

SPST Maintained Switch:

Program SC1 for “SPST Switches.” Connect the two wires from the switch to common and open. Electrical closing of switch sends “Close.” Opening of switch sends “Open.” Enabling “Invert” causes closing of the switch to send “Open” and vice versa (useful for winter/summer if using a thermostat). To “Stop” a motor while it is running: “Quick Toggle” of the switch (running open—flip to “Close” then back to “Open”) will stop the motor.

SPST Momentary Push-Button Switch:

Program SC1 for “SPST Switches.” Connect switch between common and close. A Momentary Press of this switch sends a command to run. The direction that the motor runs is in relation to the “last command” that the SC1 received, so it could be “Open” or it could be “Close.” This switch method is a true sequential switching action.

Timed relay closure from automation system:

Program to factory default (SPDT Momentary Switch). Closure of either relay sends the appropriate command. The contact time of this “Momentary” closure should be ½ second.

For use with X-10 controls:

- ① SPDT Mode: Program to factory default, and connect 2 universal modules in momentary mode (one between open and common, the other between close and common.)
- ② Activate the open module to open the shade; activate the close module to close the shade; simply repeat any command to stop the shade.
- ③ SPST Mode: Maintained—Using one universal module connect two wires between Open and Common. X-10 to deliver a maintained contact. Electrically Closed=shade closed. Electrically Open=shade open. The delay times within the X-10 system make it difficult to stop the motor using the “Quick Toggle” feature of the SC1.

Programming the PSI60

To Enter Program Mode—

- ① Using a programming remote - press & hold “Stop.”
- ② While still holding “Stop,” press both “Open 7” and “Close 7,” then release all three buttons. Within 6 seconds press “Close All.” The Red Program Mode LED on the PSI60 must now be lit. If it is not repeat the above steps. In the following table, S = “Stop,” C = “Close,” O = “Open”.

Desired Change	LED:	on	blink	blink	off
Left Switch Channel to 1	S+7+7	C ALL	C 1	O 1	S
Left Switch Channel to “N” (N = ALL, 1 - 60)	S+7+7	C ALL	C 1	O “N”	S
Left Switch Channel to “ALL”	S+7+7	C ALL	C 1	O ALL	S
Reset the Left Switch options to factory default	S+7+7	C ALL	C 2	O ALL	S
SPST Switches on Left	S+7+7	C ALL	C 2	O 3	S
SPDT Maintained Switch on Left	S+7+7	C ALL	C 2	O 2	S
Invert Left SPST switch	S+7+7	C ALL	C 2	O 4	S
Right Switch Channel to “N” (N = ALL, 1 - 60)	S+7+7	C ALL	C 3	O “N”	S

Notes:

- The right switch must be SPDT Momentary. Its type cannot be changed via programming. Left switch default is SPDT Momentary switch.
- The PSI60 unit is also a repeater.
- This unit cannot be used as the only repeater in a system unless everything is already programmed, because “enter program” commands are blocked and NOT repeated.
- While programming this unit (red LED is on) IR signals are not repeated.
- Note that the Palm Pilot will not program this unit correctly.
- Pushing a second button while another is active will cause the first button to be interrupted. The SC1 will probably ignore the change. Wait at least ¼ second between button pushes or subsequent pushes will be misinterpreted.
- If you plan to use two switches simultaneously, it is recommended that they both be SPDT momentary. If left and right switches are pushed simultaneously, note that only one will be handled at a time.
- “ALL on the cut strap T12” cannot be sent by PSI60.

DRAPER

411 S. Pearl St., Spiceland, IN 47385 USA ■ 765-987-7999

www.draperinc.com ■ fax 765-987-7142

Copyright ©2007 Draper Inc. Form IntelliFlex-PSI60_Inst07 Printed in U.S.A.

If you encounter any difficulties installing/wiring your IntelliFlex PSI60, call your dealer or Draper, Inc., Spiceland, Ind., (765) 987-7999; or fax (765) 987-7142.