

IntelliFlex™ SPGC4-Gen2 Control by Draper

Electrical Specifications



Input:

Data: +12VDC BUS Commands
 Low Voltage: Dry Contact—0VAC
 Line Voltage: 85-265VAC 50-60Hz

Output:

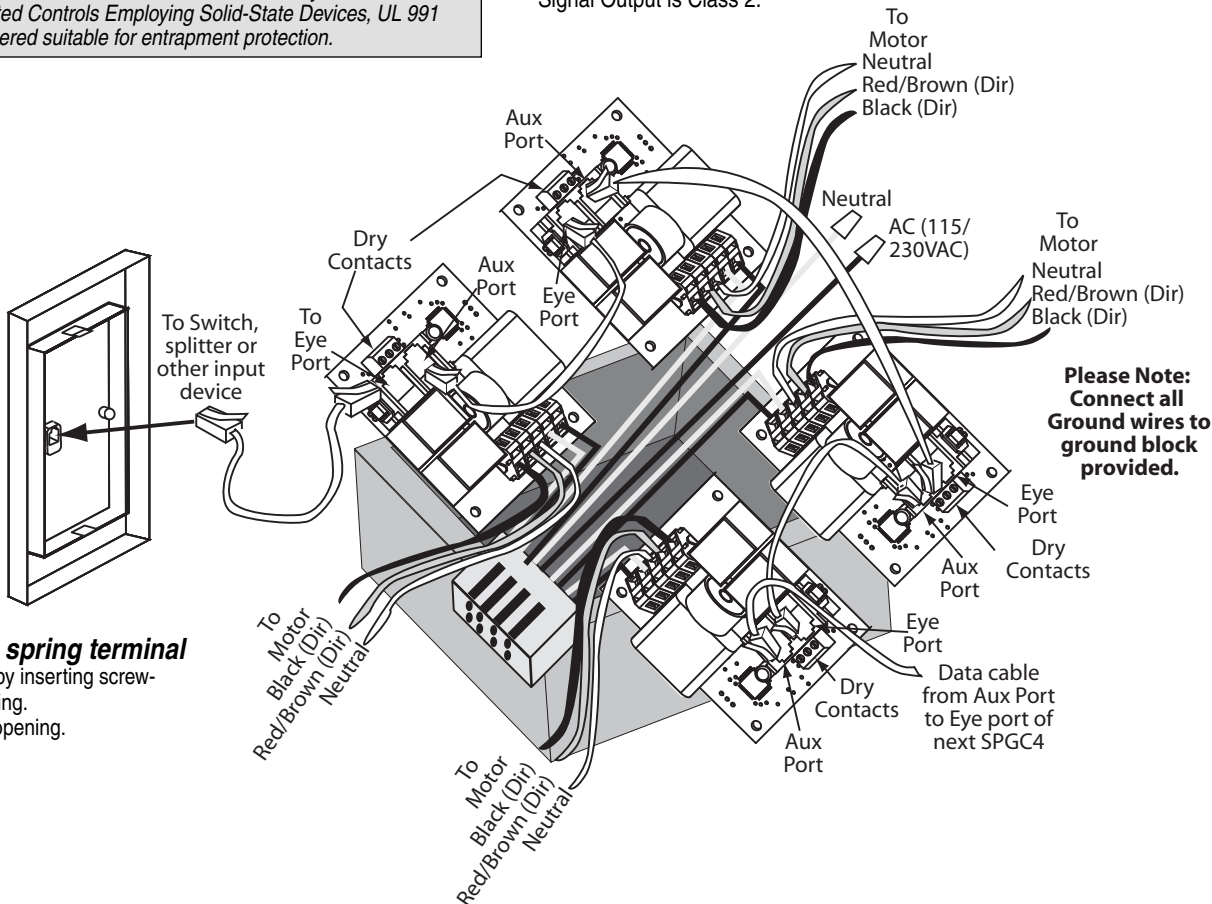
115VAC 60Hz: Largest Motor 1FLA, 4FLA Total
 230VAC 50-60Hz: Largest Motor 1FLA, 4FLA Total
 Signal Output is Class 2.

⚠ Caution

- ① Make sure power is disconnected before installing controls.
- ② SPGC4 is a line voltage control, designed to individually operate 4 motors, activated by Low Voltage input commands.
- ③ SPGC4 enclosure is 8" x 8" x 4".
- ④ The Main Disconnect and Branch Circuit Protection shall be provided by installer.
- ⑤ Maximum surrounding air temperature 50° C.
- ⑥ Use copper conductors rated 75° Celsius or higher only, 18-12AWG.

Please Note: This device has not been evaluated for reliability to the Standard for Tests for Safety-Related Controls Employing Solid-State Devices, UL 991 and therefore not considered suitable for entrapment protection.

Max of 100 feet of cable between controls, or control and input with circuit board.



Please Note: Connect all ground wires to ground block provided.

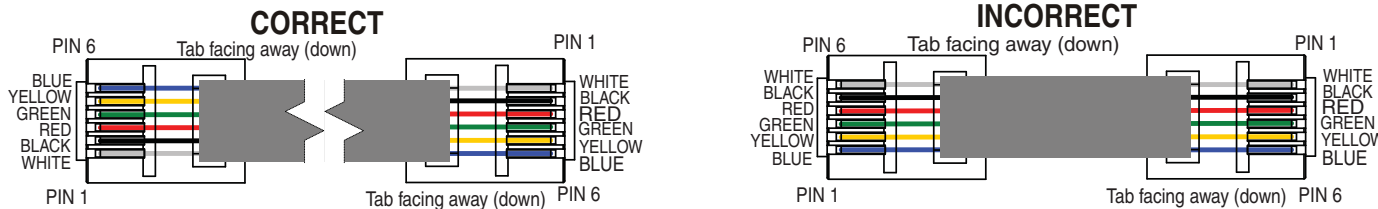
Inserting wire into spring terminal

- ① Open spring terminal by inserting screwdriver into upper opening.
- ② Insert wire into lower opening.
- ③ Remove screwdriver.



Please Note:

All input devices (low voltage LED switches, IR eye, RF receiver) which connect to the Eye jack must be connected using **electrically straight** 6-conductor modular cable (RJ25). This means colors do not cross over: blue leads to blue, green to green, etc. (see diagram below)



Six-Pin Layout

COLOR	PIN #	FUNCTION
WHITE	1	RQ CLOCK
BLACK	2	COMMON
RED	3	+5VDC
GREEN	4	RQ DATA
YELLOW	5	RP DATA
BLUE	6	+12VDC

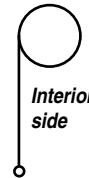
Please Note: For low voltage wiring requirements, Draper recommends consulting with a professional low voltage electrical contractor. It is very important that shielded and stranded CAT 5 cable be used to prevent any electrical interference.

Fabric unrolling from back of roller (standard)

Fabric unrolling from front of roller (reverse roll)

Right hand motor (Standard)

Black—Up
Red—Down



Right hand motor (Standard)

Red—Up
Black—Down



Left hand motor

Black—Down
Red—Up

Left hand motor

Red—Down
Black—Up



411 S. Pearl St., Spiceland, IN 47385 USA ■ 765-987-7999
 www.draperinc.com ■ fax 765-987-7142