

Wiring Instructions

IntelliFlex™ GC4 Gen-2 Control by Draper

Part Number C156.058

Please Note

- ① Make sure power is disconnected before installing controls.
- ② This product allows up to four motors to be connected to one motor control or switch and provides group control of these motors. Make sure the total FLA of all motors grouped together does not exceed the load carrying capacity of the switch or motor control being used.
- ③ Up to 3 GC4s (12 motors total) can be banked as long as the switch ratings are not exceeded and 80% of the circuit breaker rating is not exceeded.
- ④ GC4 enclosure is 8" x 8" x 4".
- ⑤ The Main Disconnect and Branch Circuit Protection shall be provided by installer.
- ⑥ Maximum surrounding air temperature 70 degrees Celsius.
- ⑦ Use copper conductors rated 75 degrees celsius or higher only, 18-12AWG.

Please Note: This device has not been evaluated for reliability to the Standard for Tests for Safety-Related Controls Employing Solid-State Devices, UL 991 and therefore not considered suitable for entrapment protection.

Electrical Specifications

Input:

Line Voltage: 115v AC +/- 10%

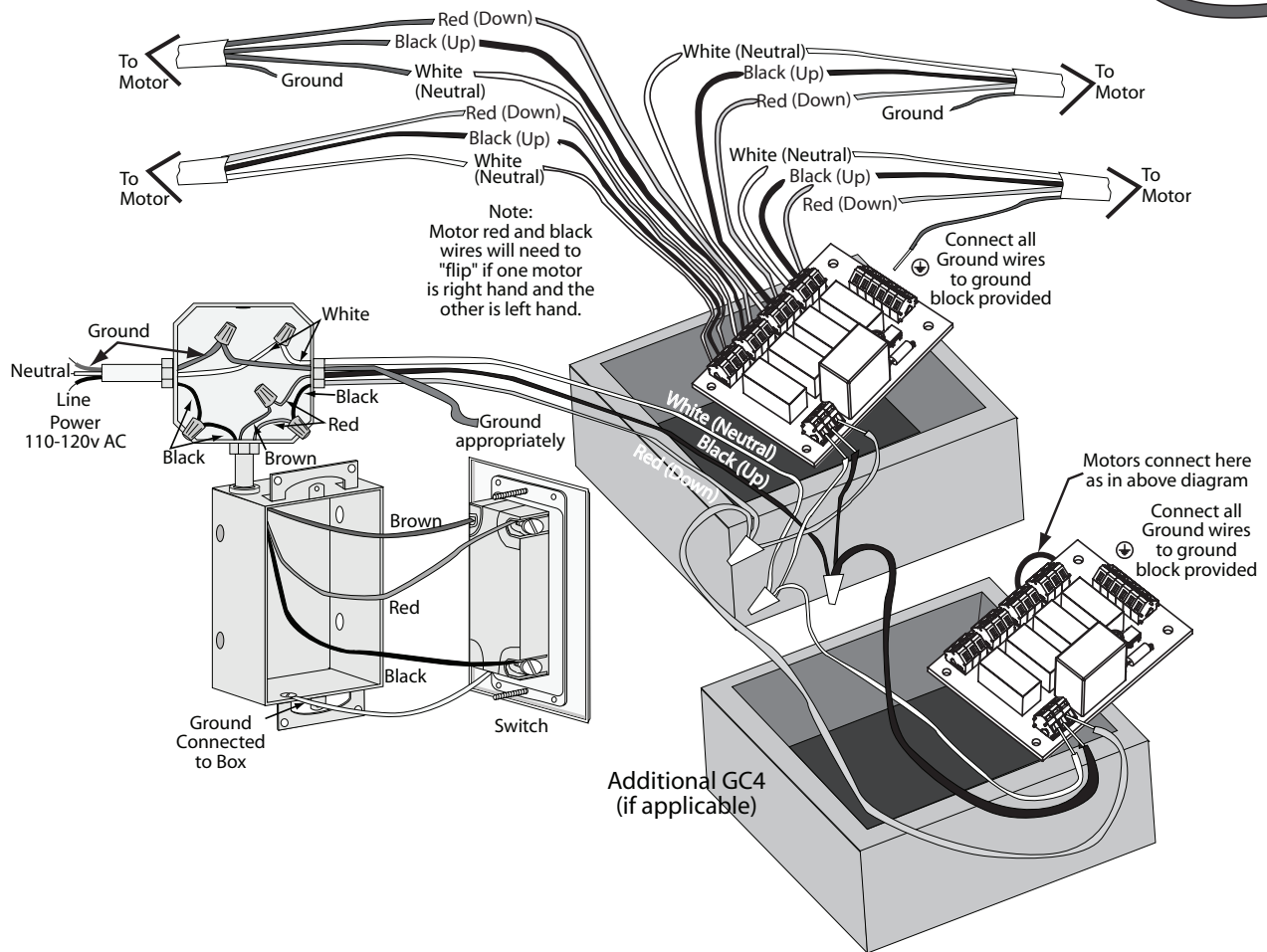
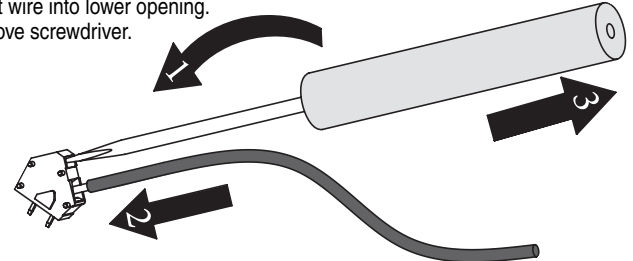
Output:

115VAC Largest Motor 1FLA, 4FLA Total



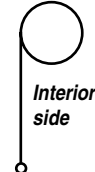
Inserting wire into spring terminal

- ① Open spring terminal by inserting screwdriver into upper opening.
- ② Insert wire into lower opening.
- ③ Remove screwdriver.



Fabric unrolling from back of roller (standard)

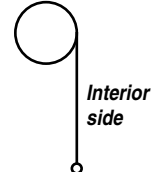
Right hand motor (Standard)
Black—Up
Red—Down



Left hand motor
Black—Down
Red—Up

Fabric unrolling from front of roller (reverse roll)

Right hand motor (Standard)
Red—Up
Black—Down



Left hand motor
Red—Down
Black—Up

DRAPER®

411 S. Pearl St., Spiceland, IN 47385 USA ■ 765-987-7999
www.draperinc.com ■ fax 765-987-7142

Copyright ©2009 Draper Inc.

Form GC4_WD09

Printed in U.S.A.

If you encounter any difficulties installing/wiring your IntelliFlex control, call your dealer or Draper, Inc., Spiceland, Ind., (765) 987-7999; or fax (765) 987-7142.