



**Revelation**—Motorized Ceiling-Recessed Projector Mount. With a Revelation, the projector is permanently concealed above the ceiling. You won't see or hear the projector—not before, during or after the show. Revelation truly fits into a 2' x 2' grid style ceiling. It can also be used with a reveal style grid ceiling (Armstrong's Silhouette style grid system). Mirrors are optical grade glass—94% reflective. The Revelation's highly reflective dual first surface mirror system delivers a perfect picture to your screen at the touch of a switch or wireless controller. 220v transformer available.



Visit <http://www.draperinc.com/go/RevelationPlanSheet.htm> for a planning sheet.

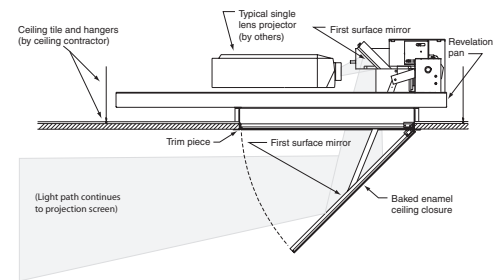
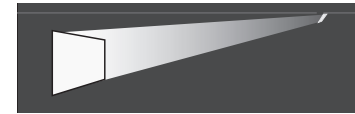
**Options:** See page 84 for control options.

U.S. Patent Number 6,379,012.

Revelation	Part No.	PRICE	Shipping Wt./lbs.	Freight Class
<b>With Environmental Airspace Housing</b>				
Model A	300027	\$4750	185	85
Model B	300023	4833	200	85
<b>Without Environmental Airspace Housing</b>				
Model A	300025	\$3458	165	85
Model B	300019	3583	186	85
<b>Environmental Airspace Housing Only</b>				
Model A	300014	\$1417	76	85
Model B	300021	1417	85	85

**Revelation Optional Accessories**

Revelation Accessory	Part No.	PRICE	Shipping Wt./lbs.
Revelation Shield	300030	\$758.00	20
MiroClear	254020	37.00	3
<b>Ceiling Access Doors</b>			
White Finish	300007	\$333.00	30
Accepts Ceiling Tile	300008	583.00	30



**Revelation Shield**—Made of anti-reflective glass and installed in the main pan of the Revelation and between the first and second mirror/ceiling closure. The Shield serves two valuable purposes: It reduces projector noise in the audience area by more than 80%, and it prevents cigarette smoke, grease or other harmful substances from reaching the projector. Virtually none of the projected light is lost as it passes through the Shield.

**MiroClear**—A superior quality cleaning and restoration kit designed specifically for all first surface glass mirrors. Improves image quality, maintains new mirrors to the highest standards, brings new life to older mirrors and restores reflectivity loss caused by dust, dirt, fingerprints and grimy build-up that accumulates and robs mirror of critical reflectivity.

**Ceiling Access Door**—If you plan to install your Draper Projector Lift above a finished ceiling, these access doors provide above-the-ceiling access for cleaning, maintenance or repairs without damage to the ceiling. Available with a white painted finish, or recessed to accept ceiling tile.

**Freight Class Key**

**Number** ..... LTL freight class  
**U** ..... Regular UPS  
**+** ..... \$6 surcharge (over 60" long)  
**Example:** a freight code of 125 U+ indicates an item that may ship as freight class 125 or via UPS with a \$6 surcharge.