

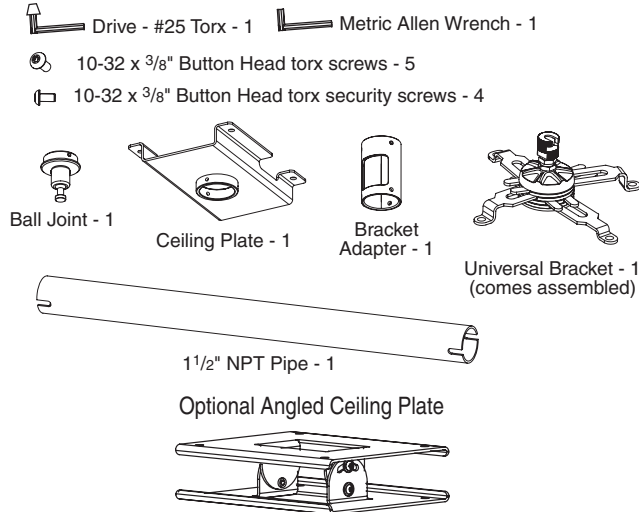
Installation Instructions

Accuset Fixed Extension Mount for LCD/DLP Projectors by Draper

Caution

- ① Installer must make sure Accuset Mount for LCD/DLP Projectors is positively and securely attached, and appropriate fasteners are used.
- ② Before installing, check to make sure all parts of the mount are there.
- ③ Assembly hardware is included; fasteners for attaching mount to ceiling are not included.
- ④ Make sure all screws and bolts are tightened before allowing Accuset Mount for LCD/DLP Projectors to bear the full weight of the projector.
- ⑤ Mount projector before hooking up to electrical and other cables.
- ⑥ When making adjustments, make sure projector is firmly supported.
- ⑦ Adjustment setscrews require Metric Allen wrench (included).
- ⑧ Assembly screws require Torx Head drive (included).

Accuset Fixed Extension—Parts and Hardware



Installation

- ① Screw column into Ceiling Plate (see Fig. 1).
- ② Attach Bracket Adapter and Ball Joint Assembly to column and secure with provided screw (see Fig. 1). For increased security, replace the standard screw with a security screw (provided).

Please Note: For additional security, you can also remove the three standard screws holding the Ball Joint in the Bracket Adapter, and replace them with provided security screws.

- ③ Use mounting plate to mark ceiling (see Fig. 2).
- ④ If appropriate, run wiring down through pipe and out through opening in Bracket Adapter.
- ⑤ Attach plate to ceiling. If using optional Angled Mounting Plate, attach Ceiling Mounting Plate to Angled Mounting Plate using 1/4"-20 x 5/8" long hex head screws (provided), then attach Angled Ceiling Mounting Plate to ceiling (hardware for ceiling attachment not included).
- ⑥ Install Universal Projector Bracket on projector if applicable (see separate instructions). Then, attach bracket and projector to Accuset ball joint (see separate instructions) and adjust ball joint as necessary (see Fig. 3)

Please Note: If you are cutting or providing your own pipe, make sure the pipe has 1 1/2" NPT threads.

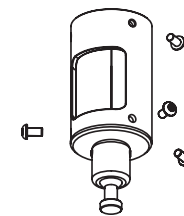
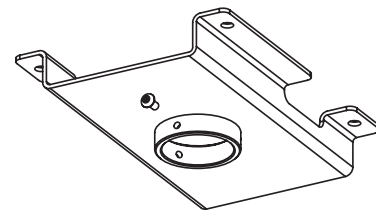


Figure 1

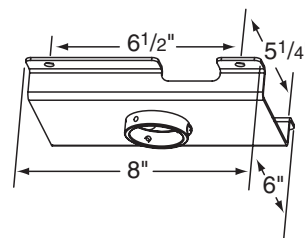


Figure 2

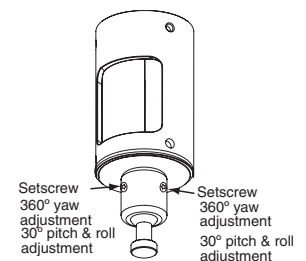


Figure 3

DRAPER

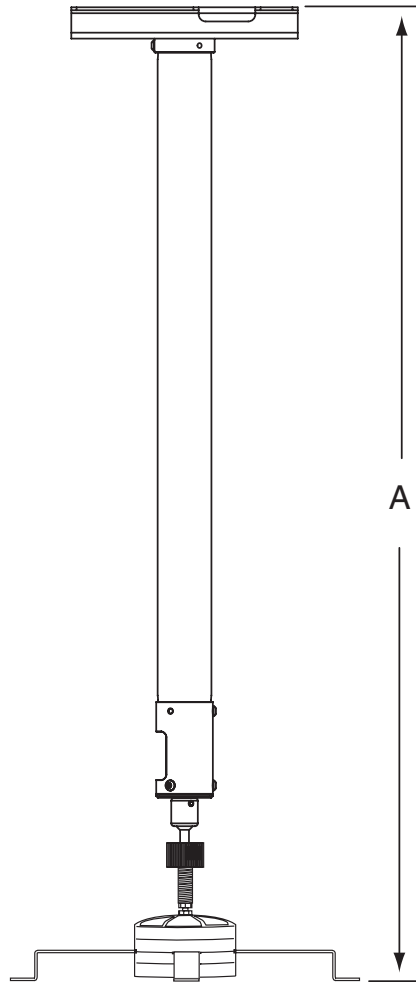
411 S. Pearl St., Spiceland, IN 47385 USA ■ 765-987-7999 ■ fax 765-987-7142
 e-mail draper@draperinc.com ■ www.draperinc.com

Copyright ©2006 Draper Inc. Form AccusetFixed_Inst06

Printed in U.S.A.

If you encounter any difficulty installing or servicing your Accuset Mount for LCD/DLP Projectors, call your dealer or Draper, Inc., Spiceland, Indiana, (765) 987-7999; fax (765) 987-7142; or e-mail draper@draperinc.com.

Accuset Fixed Extension Mount Dimensions



A*
14 ¹ / ₂ "
20 ¹ / ₂ "
26 ¹ / ₂ "
32 ¹ / ₂ "
44 ¹ / ₂ "
56 ¹ / ₂ "
68 ¹ / ₂ "
80 ¹ / ₂ "
92 ¹ / ₂ "
104 ¹ / ₂ "
116 ¹ / ₂ "
128 ¹ / ₂ "

****Pipe length may be cut by installer to fit site requirements.***