

Multi-Sport Practice Cage

by **DRAPER**

Specifications—Multi-Sport Practice Cage

GENERAL: Cage shall be _____ H x _____ W x _____ L (standard: 10'0" high x 12'0" wide x 70'0" long), complete with frame, net, cables, and electric winch for lowering to floor when in use and raising to underside of roof structure for storage. Net sides may be folded onto top of cage for maximum clearance during storage.

I. FRAME

- Frame of cage to be constructed of 1 5/8" x .109 wall tubing.
- Fittings to be malleable iron galvanized with case hardened set screws.
- Frame is supported with 1/8" galvanized aircraft cable termination onto a rotating drive pipe.

II. WINCH

- Drive pipe power mechanism shall consist of a 1 H.P., 110-120 volt, 60 cycle, single phase reversible capacitor motor with built-in thermal overload protection. The motor and load holding worm gear reducer shall provide speed reduction in the winch. Remote control operation to include integral limit switch to control the upper and lower limit of the curtain travel. Key lock, three position, momentary contact wall switch with safety delay included. Switch unit shall include a general purpose switch box with a polished wall plate.

III. NETTING

- Four sides and top of cage shall be 3/4" square, knotless nylon mesh white netting.
- 3/8" polypropylene rope shall be sewn into the perimeter of each section of netting.
- Two corners of the cage shall be sewn together; two shall be secured using zippers, allowing one long sidewall to be raised.
- Netting shall be suitable for use with baseball, softball and golf.

IV. OPTIONAL SMART GYM CONTROL SYSTEM

See separate sheet.

Please Fill In Following Measurements: (See back page)

Height from Bottom of Beam to Top of Finished Floor: _____

Distance Between Beams: _____

Slope: _____

Width of Beams: _____

Practice Cage Placement:

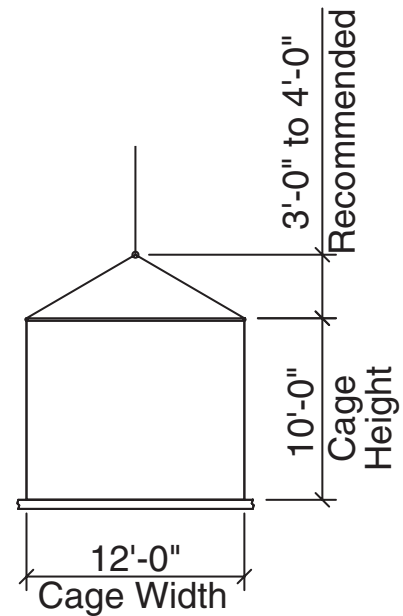
- Parallel to Roof Beams
 - Centered Between Two Beams
 - Centered Directly Beneath Beam
- Perpendicular to Roof Beams

Options

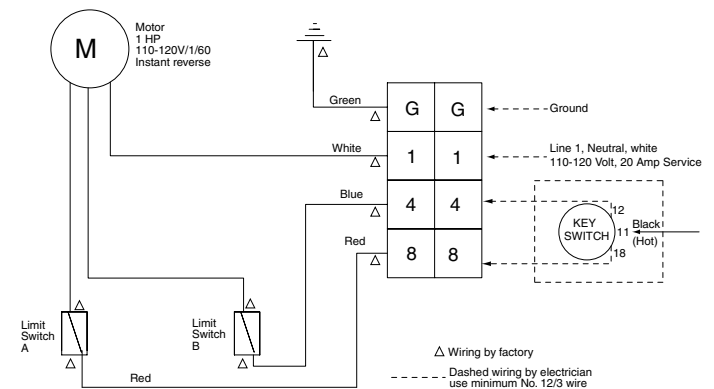
- Wireless Remote Control (see separate sheet)
- Smart Gym Wall Touch Pad Control (see separate sheet)

Section Drawing

Shown Directly under continuous beam



Wiring Diagram



Circuit breaker rated amp. 20 amp.
Fused circuit rated amp. 20 amp.

Minimum Wire Size
90' maximum run. 12 ga.
90' to 140' run. 10 ga.
Over 140'. 8 ga.

Sizes of wall masonry boxes required for single and ganged key switches-- All boxes 2" (w) x 3 3/4" (h) x 2 1/2" (d).

DRAPER

411 S. Pearl St., Spiceland, IN 47385 USA ■ 765-987-7999 ■ fax 765-987-7142
e-mail draper@draperinc.com ■ www.draperinc.com

Copyright © 2005 Draper Inc. Form PracticeCage_Sub05-R Printed in U.S.A.

PROJECT: _____

ARCHITECT: _____

CONTRACTOR: _____

SUPPLIER: _____

DATE: _____ REVISED: _____

