

C129.003 Gym Divider Winch

Electrically Operated
Gym Divider Winch

by **DRAPER**

Specifications—Motorized Gym Divider Winch

_____ winches shall be motorized gym divider winches by Draper, Inc., Spiceland, IN.

Drive pipe power mechanism shall consist of a 1 HP, 110-120V, 60 cycle, single phase reversible capacitor motor with built-in thermal overload protection. The motor and load holding worm gear reducer shall provide speed reduction in the winch. Remote control operation to include integral limit switch to control the upper and lower limit of the curtain travel. Key lock, three position, momentary contact wall switch with safety delay included. Switch unit shall include a general purpose switch box with a polished wall plate. Key switch or controls to be in full view of both sides of curtain during operation.

Please check all appropriate selections

Building Structure in Relation to Curtain

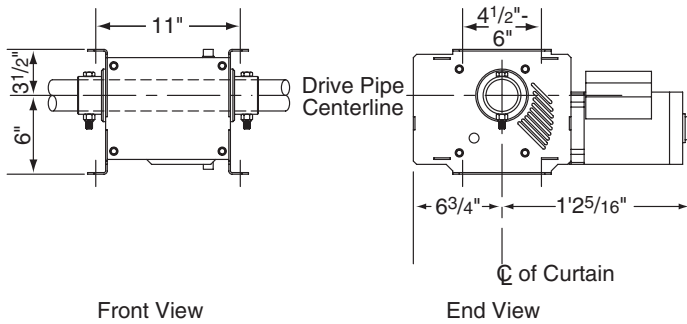
- Directly under continuous beam
- Between two beams. Distance between the beams: _____
Distance between curtain and beam: _____
- Right Angle to beams. Spacing between beams: _____

Building Structure for Curtain Support

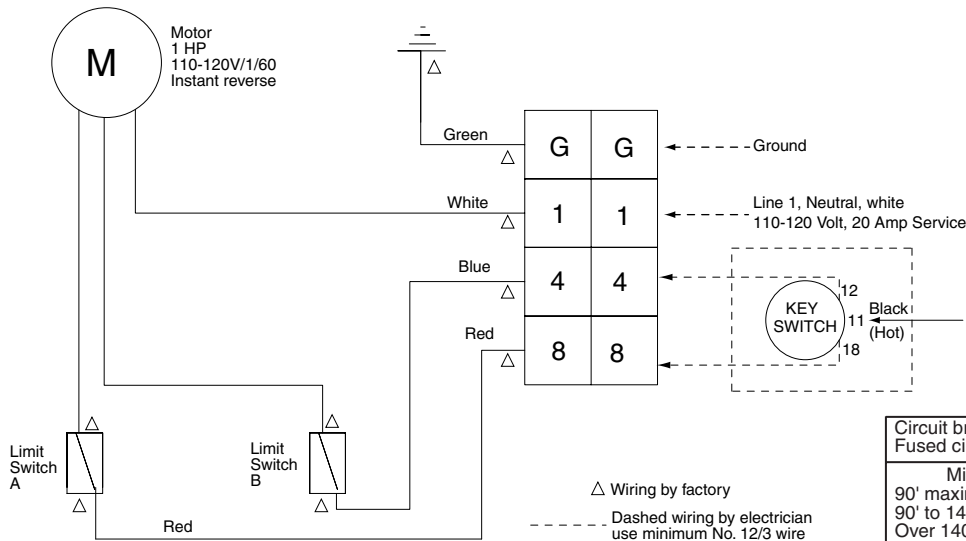
Beam flange width: _____
Beam flange thickness: _____

Control Options

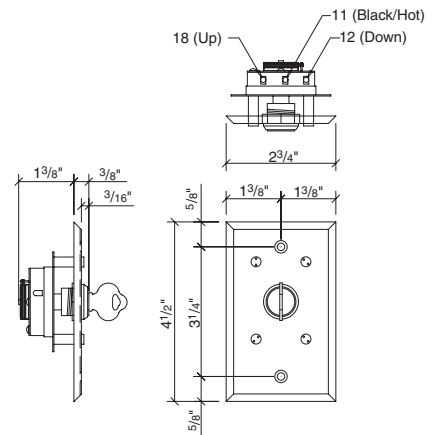
- Wireless Remote Control (see separate sheet)
- Smart Gym Touchpad Control (see separate sheet)
- 503084 Plug Kit (6' pigtail, twist-on plug, receptacle, and box cover)



Wiring Diagram



Key Switch



Circuit breaker rated amp. 20 amp.
Fused circuit rated amp. 20 amp.

Minimum Wire Size
90' maximum run. 12 ga.
90' to 140' run. 10 ga.
Over 140'. 8 ga.

Sizes of wall masonry boxes required
for single and ganged key switches--
All boxes 2" (w) x 3 3/4" (h) x 2 1/2" (d).

DRAPER

411 S. Pearl St., Spiceland, IN 47385 USA ■ 765-987-7999 ■ fax 765-987-7142
e-mail draper@draperinc.com ■ www.draperinc.com

Copyright © 2005 Draper Inc. Form GymDividerWinch_Sub05-R2 Printed in U.S.A.

PROJECT: _____

ARCHITECT: _____

CONTRACTOR: _____

SUPPLIER: _____

DATE: _____ REVISED: _____