

Installation Instructions

Roll-Up Gym Divider by Draper

Caution

- ① Locate and identify all parts using the hardware list and the drawings. "As built" drawings and hardware list are packed in hardware carton. Do not discard with packing material.
- ② DO NOT touch divider curtain while it is in motion.
- ③ Key switch is packed in winch crate, do not discard.
- ④ Divider operates on 110-120V, 60 Hz current (unless noted otherwise).
- ⑤ **Key switch or controls to be in full view of both sides of curtain during operation.**
- ⑥ Wiring diagram can be found inside winch limit cover panel.
- ⑦ Instructions for attaching and wiring the winch are packed in winch carton.

NOTE: Winch has been tested at the factory and found to be operating correctly prior to shipment.

These instructions are meant as a guide only. They do not bind Draper, Inc. in any way and do not imply any responsibility of Draper, Inc. for improper installation or faulty workmanship at the jobsite.

Hardware Installation

- ① Verify overall height and width with shop drawing to determine possible discrepancies.
- ② Attach winch support brackets to winch housing and install winch per location shown on shop drawing.
- ③ Install drive pipe support assembly (typically Z-Bracket and Flange Clamps) per locations shown on shop drawing.
- ④ Attach drive pipe support assemblies to Z-Bracket with threaded rod. Adjust assemblies vertically to proper height shown on shop drawing (see Fig. 1).
- ⑤ Install double drive pipe support assemblies to Z-Bracket with threaded rod at positions shown on shop drawing (typically adjacent to belts only) (see Fig. 2).
- ⑥ Using the project drawings, identify the 2³/₈" drive pipe section that attaches to the winch (normally the shortest section). Attach to winch output shafts, drilling and installing hardware as shown on drawings.
- ⑦ Raise the other drive pipe sections as indicated on project drawings.
- ⑧ Attach pipes together with drive pipe splicers to obtain one long continuous run of drive (see Fig. 3).
- ⑨ Operate the winch to determine that the drive pipe is rolling level. Make adjustments accordingly.
- ⑩ Position lift cables onto drive pipe in preparation of lifting curtain (lift cable not supplied).

Curtain Installation

- ① Lay the curtain out with the top of the curtain close to the lift cables hanging down from the drive pipe.
 - ② Slide 1⁵/₈" top batten tube into top pocket one section at a time, assembling as you go. Use 1³/₈" OD x 1'6" tube to connect sections of batten tube. Splice should be installed with so equal portions are inside each tube that is being connected. Install 5/16" x 1/4" setscrews in pre-drilled and tapped holes in batten tubes. Make sure outer tube sections are rotated to where the setscrews are in line prior to tightening (See Figs. 4 and 5).
 - ③ Assemble 4" bottom batten as shown on shop drawings using 3³/₄" OD x 18" splice tubes. (See Fig. 5).
 - ④ Using a chalk line, mark along the length of the assembled 4" batten tube to be used as a guide when attaching the curtain.
 - ⑤ Attach the square raw bottom edge of curtain fabric to the 4" bottom tube using adhesive strip. Make sure the curtain is flat, square and rolled straight.
- Please Note:** Use of floor rollers or of inverted top cradles used in Draper Roll-Up Dividers make it easier to keep fabric square to 4" tube.
- ⑥ Curtain fabric is 6"± wider than 4" bottom tube. Attach fabric so equal amounts of fabric overhang each end. Do not allow fabric to extend onto the heat seamed edging of curtain fabric. Cut 4" bottom tube if necessary.
 - ⑦ Refer to shop drawing and mark finished height of curtain. The typical curtain height received is 20" longer than shown on shop drawing, allowing 1¹/₂± revolutions around pipe.
 - ⑧ Roll curtain on tube to desired position. Attach stop strip in predrilled holes with self-tapping screws supplied. Installer should use a file to round the corners of the stop strip to lessen the possibility of curtain tears (see Fig. 6).

DRAPER®

411 S. Pearl St., Spiceland, IN 47385 USA ■ 765-987-7999
www.draperinc.com ■ fax 765-987-7142

Copyright © 2011 Draper Inc. Form Roll-Up-Divider_Inst11 Printed in U.S.A.

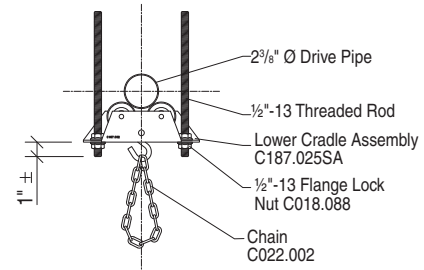


Figure 1

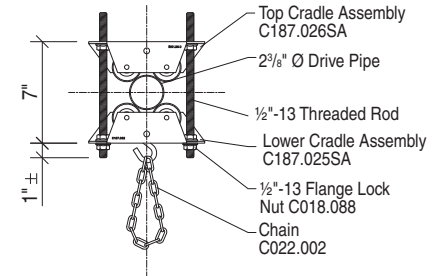


Figure 2

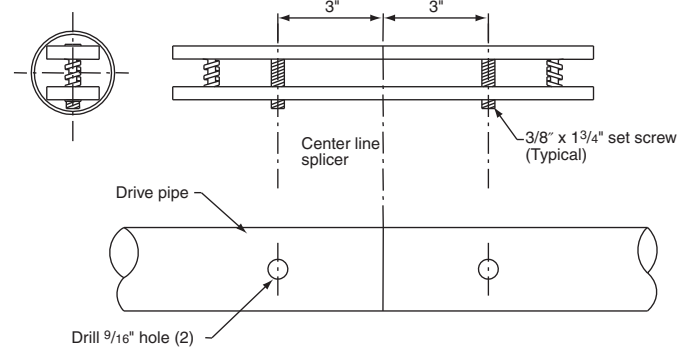


Figure 3

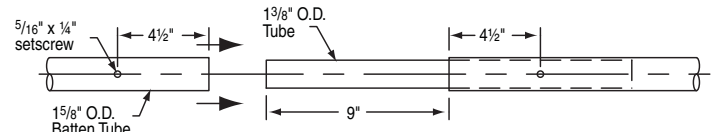


Figure 4

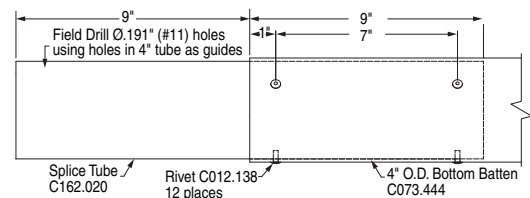


Figure 5

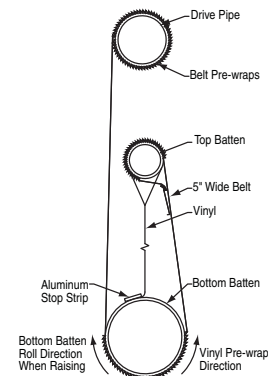


Figure 6

If you encounter any difficulties installing or servicing your Roll-Up Gym Divider, call your dealer or Draper, Inc., Spiceland, Ind., (765) 987-7999, or fax (765) 987-7142.

Curtain installations continued

- ⑨ Attach dangling lift cables (supplied by installer) around top 1 5/8" pipe contained in the top pocket of the curtain, and raise curtain.
- ⑩ When the curtain is in the raised position, attach chain from drive pipe support assemblies around top pipe. Small cut in pocket required for chain. As the chains are attached, disconnect the cable from the top pipe.
- ⑪ Attach belts, **shiny side in**, to drive pipe with the aid of double face tape. Position all belts at the same position on the drive pipe and secure with self-tapping screws.
- ⑫ All belts are to be wound onto drive in the same direction. 2'-0", or three complete wraps, should remain on drive when divider is in full down position (called the pre-wrap).
- ⑬ Rolling action of curtain should be against the stop strip, or in other words, the stop strip should never roll under the curtain. The positioning of the belts onto the drive pipe will determine the direction.
- ⑭ Once belting is attached to drive pipe, drop belting to the floor, pass beneath the curtain and raise the belt up to the top 1 5/8" pipe contained in the top pocket of the curtain.
- ⑮ Drill holes in belting for the nuts and bolts used to secure belting around the top 1 5/8" pipe. Small cut required in pocket for belts. Trim excess belt from end.

Adjustments

- ① Operate curtain up to the stored position and set limit (see Fig. 7). Operate curtain to the down position and set limit.
- ② In the down position make sure limit has been set to allow the fabric build up to be fully extended.
- ③ There are two basic vertical adjustments to this divider. One is the threaded rods attaching the drive pipe support assemblies to the drive pipe support angles. The other is the chain from the drive pipe support assembly to the top of the curtain (see Fig. 1).
- ④ If the belt tends to runoff in one direction when the curtain rolls up, instead of stacking up in a uniform pile, shim the belt within the pre-wrap (pre-wrap is described in step 11 above.) To shim: cut a 1/2" wide piece of belt from your excess belt. Unroll the curtain all the way and disengage down limit to expose pre-wrap on the drive. Position the 1/2" piece under an edge of pre-wrap (use the edge opposite the direction of runoff) and secure with double face tape. Roll the curtain back up a few turns to cover the pre-wrap and reset the down limit switch. Then continue rolling the curtain up. Repeat as necessary. No two curtains behave the same, so this is a trial and error procedure.

Caution

Operating the curtain too far in either direction could cause severe damage to the divider.

Limit Switch Adjustment

Please Note: One upper and one lower travel limit switch is provided. Proper adjustment is simple and quick with the following procedure. Always shut power off from the winch when working inside the electrical compartment. The cover has been designed for quick removal to simplify limit switch adjustment.

- ① Run the winch in the "up" direction to raise the divider curtain to the desired (fully raised) position and stop it in this position. Turn off the power to the winch and remove the electrical compartment cover. (2 screws)
- ② Slacken the two thumb nuts holding the upper limit switch.
- ③ Slide the upper limit switch across until the blade contacts the limit trip rod, then slide it a little further until an audible click is heard as the switch opens. Tighten the thumb nuts. The top limit is now set.
- ④ Temporarily install the cover and run the divider curtain down to the desired lower stop position and set the lower limit switch in the same way.
- ⑤ Run the curtain up and down again to check the settings
- ⑥ Make a final check to make sure that all fasteners are tight.

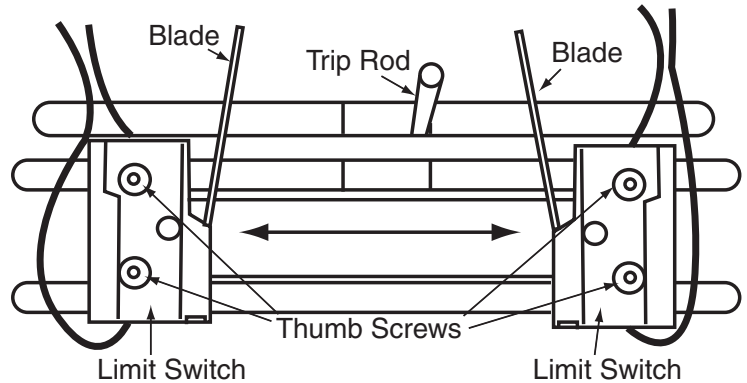
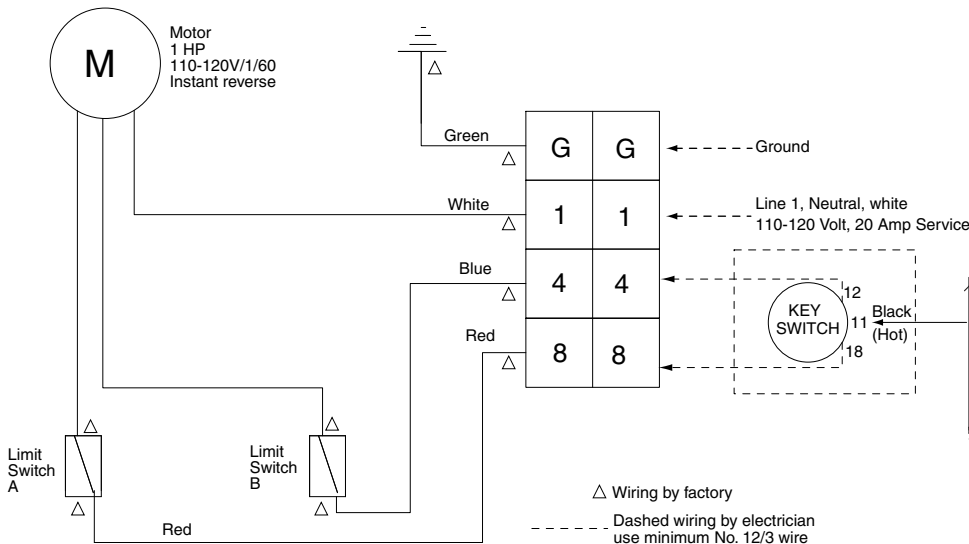


Figure 7

Wiring Diagram



Circuit breaker rated amp. 20 amp.	
Fused circuit rated amp. 20 amp.	
Minimum Wire Size	
90' maximum run.	12 ga.
90' to 140' run.	10 ga.
Over 140'	8 ga.
Sizes of wall masonry boxes required for single and ganged key switches-- All boxes 2" (w) x 3 3/4" (h) x 2 1/2" (d).	

