

Installation Instructions

Ridge-Fold Gym Divider by Draper

Caution

- ① Locate and identify all parts using the hardware list and drawings, which are packed in hardware carton. Do not discard with packing material.
 - ② DO NOT touch divider curtain while it is in motion.
 - ③ Key switch is packed in winch crate; do not discard. Divider operates on 110-120V, 60 Hz current (unless noted otherwise).
 - ④ **Key switch or controls to be in full view of both sides of curtain during operation.**
 - ⑤ Wiring diagram is located inside the door of the gray panel box on the winch system.
 - ⑥ **Do Not** unwrap cables from drum winch assembly.
- NOTE: Winch has been tested and found to be operating correctly prior to shipment.

These instructions are meant as a guide only. They do not imply any responsibility on the part of Draper, Inc. for improper installation or faulty workmanship at the jobsite.

Hardware Installation

- ① Verify overall height and width with shop drawing.
 - ② Attach winch support angles to winch plate and install winch per location shown on shop drawing.
- Please Note:** Use the dimensions on the shop drawing. Do not measure the curtain and place hardware based on those measurements. Curtain fabric will be wider than final installed width.
- ③ The $\frac{1}{8}$ " aircraft cables used to raise and lower the divider have been pre-wrapped on the winch assembly take-up drum to ensure even travel of the curtain. Winch is shipped with cables in the Full Down position. Make sure to set the down limit switch prior to operating the winch, to ensure that you don't reverse wrap the cables.
 - ④ Attach cable pulley assemblies in locations as shown on shop drawing.
- Please Note:** Use the dimensions on the shop drawing. Do not measure the curtain and place hardware based on those measurements. Curtain fabric will be wider than final installed width.
- ⑤ Make sure cable pulley assemblies are installed with the steel pulleys in alignment with the #1 cable (closest to gearbox) on the winch assembly. All nylon pulleys should be on the same side of the divider (see Fig. 1).
 - ⑥ Beginning with the longest cable (the one that runs furthest from the winch), feed all of the $\frac{1}{8}$ " cables from the winch assembly over the top of each pulley on the pulley assemblies. There is one cable that drops vertically from each pulley assembly and this cable must drop from the steel pulley. The nylon pulleys will guide the remaining cables from one pulley assembly to the next. Make sure the cables are not twisted together between pulley assemblies.

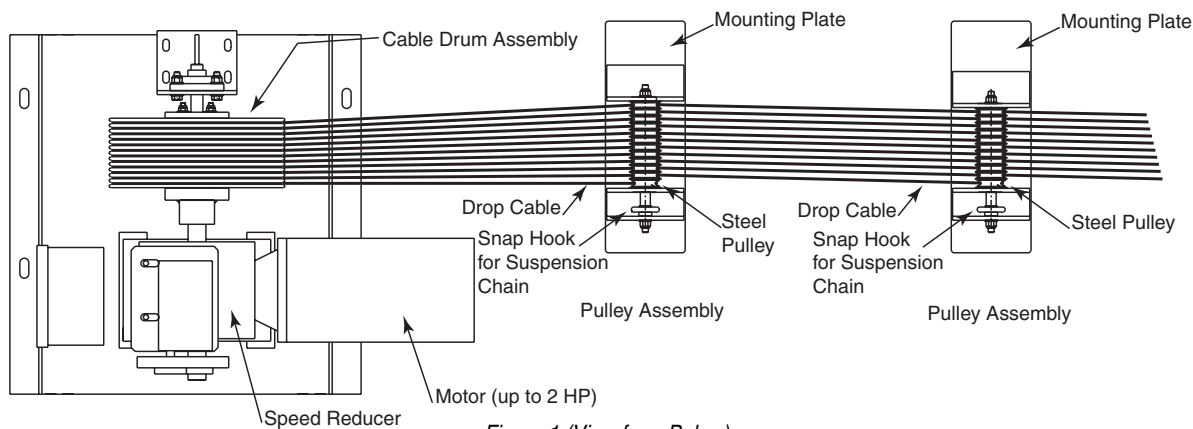


Figure 1 (View from Below)

Curtain Installation

- ① Lay the curtain out with the top of the curtain close to the dangling aircraft cables.
- ② Slide the $1\frac{5}{8}$ " top batten into the top pocket one section at a time, assembling as you go. Use $1\frac{3}{8}$ " x $1\frac{1}{2}$ " tube to connect sections of batten tube. Splice should be matched with equal portions inside each tube that is being connected. Install $\frac{5}{16}$ " x $\frac{1}{4}$ " in predrilled and taped holes. Rotate outer tubes to where setscrews are in line prior to tightening (see Fig. 2).

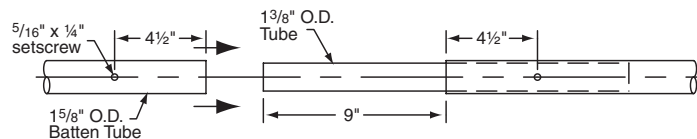


Figure 2

At pivot points along the top batten, install a pear-shaped snap hook in the center of each pivot, and connect sections using eyebolts and nylon locking nuts. **MAKE SURE ALL EYEBOLTS ARE ON THE SAME SIDE OF THE CURTAIN, WITH THE EYES FACING THE PULLIES.**

- ③ Attach cable to top batten. At pivot points, make a **small** cut in the pocket above the pipe, wrap cable around batten and temporarily secure with cable clamps. At other attachment points, make a small cut just below the batten, wrap cable around batten, and temporarily secure with cable clamps. DO NOT attach cable to eye bolt.
- ④ Operate winch to raise curtain into position.
- ⑤ Once raised to proper height, attach clamps hanging from the pulley assemblies to the top batten, using small holes for lower clamp bolts, and secure chains at pivot points by connecting the chain to the pear-shaped snap hooks. Disconnect the $\frac{1}{8}$ " cables from the top batten and pass through eyebolts (see Fig. 3 and Fig. 4).

Please Note: Perform step 5 above from the center of the curtain out to one edge, then from the center out to the other edge. This allows you to keep the slack fabric between each cable evenly distributed.

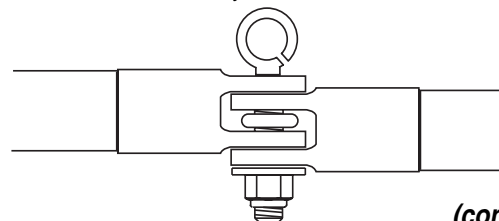


Figure 3

(continued)

DRAPER®

411 S. Pearl St., Spiceland, IN 47385 USA ■ 765-987-7999
 www.draperinc.com ■ fax 765-987-7142
 Copyright © 2009 Draper Inc. Form RidgeFold_Inst09 Printed in U.S.A.

If you encounter any difficulties installing or servicing your Ridge-Fold Gym Divider, call your dealer or Draper, Inc., Spiceland, Ind., (765) 987-7999 or fax (765) 987-7142.

- ⑥ Thread cables through grommets in curtain.
- ⑦ Slide bottom batten into bottom pocket one section at a time, assembling as you go. **DO NOT USE EYEBOLTS ON BOTTOM BATTEN.**
- ⑧ At pivot points, pass cable through pear-shaped snap hooks. At other attachment points, cut a **small** slit in the upper part of the pocket and wrap cable once around 1 $\frac{5}{8}$ " bottom batten. Secure with cable clamps, and trim excess cable (see Fig. 3 on page 2).

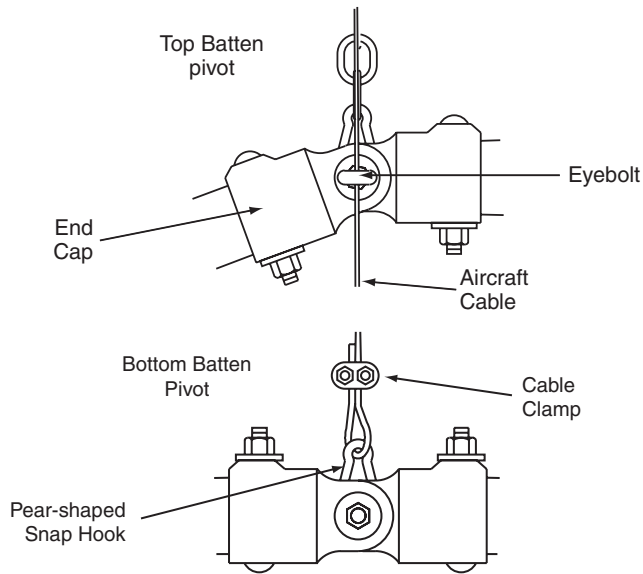


Figure 3

Adjustments

- ① If necessary, relocate pulley assemblies to ensure that drop cables and chains are vertical. (Note: center chain will not be vertical.)
- ② To ensure that the bottom of the curtain is level, use 4" wooden blocks to hold curtain off floor during adjustment.
- ③ Operate curtain up to stored position and set limit (see Fig. 4). Operate curtain to the down position and set limit (see Fig. 4).
- ④ The chains connecting the top of the curtain to the pulley assemblies can be shortened or lengthened to raise or lower the position of the curtain.

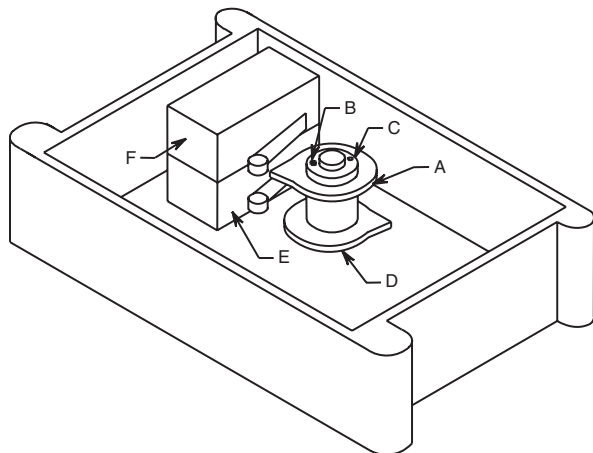


Figure 4 (Limit Switch)

Limit Switch Adjustment (Allen wrench supplied)

- To adjust cam "A", loosen cam locking screw "C" and rotate cam "A" until trip point of switch "F" is reached (indicated by "click").
- To adjust cam "D", loosen cam locking screw "B" and rotate cam "D" until trip point of switch "E" is reached (indicated by "click").

When the cams rotate, the switches are activated and the contacts change from the normally closed to open position (see sketch above).

NOTE: Cams and switches assigned to curtain's "up" or "down" position will vary according to electrician's preference.

Caution

Operating the curtain too far in either direction, or with battens improperly installed, could cause severe damage to the divider.

Secure curtain to pipe by either:

- 1) Self tapping screw with flat washer through weld zone and into pipe.
- 2) Tie off curtain to pipe by using nylon string and offset grommet.

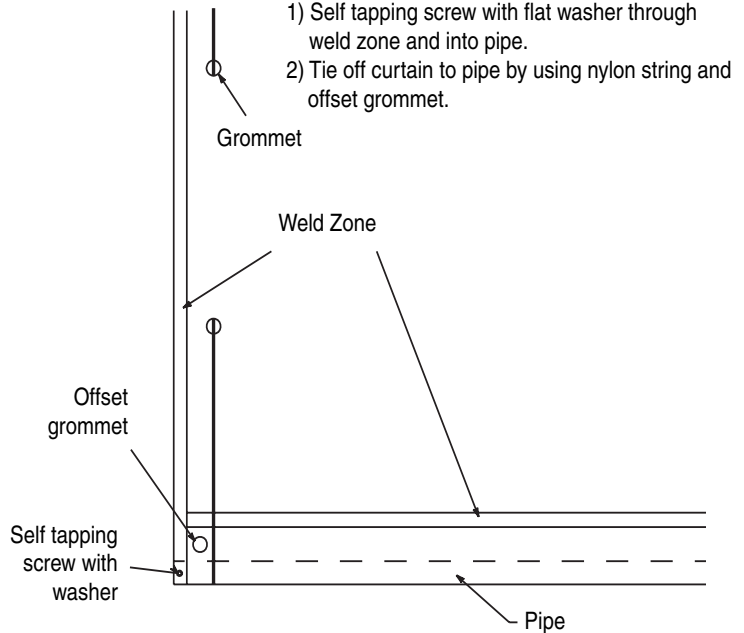
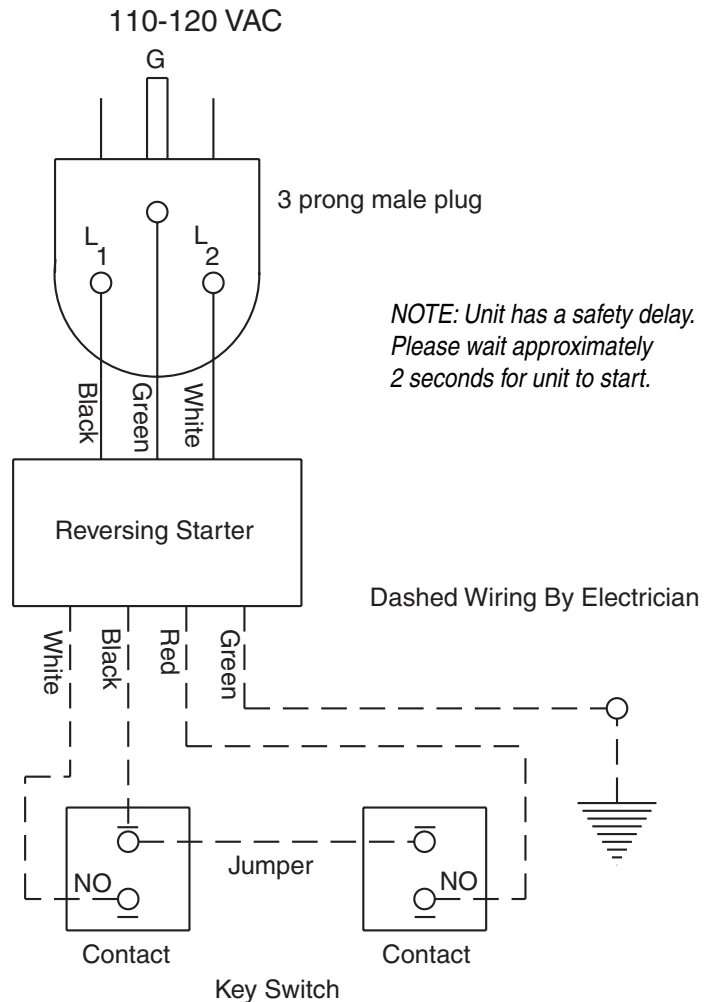


Figure 5

Wiring Diagram



NOTE: Unit has a safety delay. Please wait approximately 2 seconds for unit to start.

Dashed Wiring By Electrician