

Installation Instructions

Practice Cage by Draper

Caution

- ① Locate and identify all parts using the hardware list and the drawings. "As built" drawings and hardware list are packed in hardware carton. Do not discard with packing material.
 - ② Key switch is packed in winch crate, do not discard.
 - ③ Operates on 110-120v, 60 Hz current (unless noted otherwise).
 - ④ Wiring diagram can be found inside winch limit cover panel.
 - ⑤ Instructions for attaching and wiring winch are packed in winch carton.
- NOTE:** Winch has been tested at the factory and found to be operating correctly prior to shipment.

These instructions are meant as a guide only. They do not bind Draper, Inc. in any way and do not imply any responsibility of Draper, Inc. for improper installation or faulty workmanship at the jobsite.

Hardware Installation

- ① Verify overall height and width with shop drawing to determine possible discrepancies.
- ② Attach winch support angles to winch and install winch per location shown on shop drawing.
- ③ Install drive pipe support assembly angles per location shown on shop drawing.
- ④ Attach drive pipe support assemblies to angles with threaded rod. Adjust assemblies vertically to proper height (See Figs. 1 and 2).

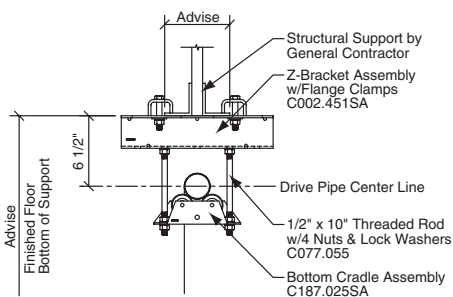


Figure 1

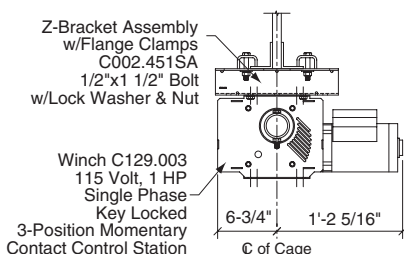


Figure 2

- ⑤ Raise drive pipe section that passes through the winch. Allow to rest on motor and drive pipe support assemblies.
- ⑥ Raise other drive pipe sections. Once the drive pipe is resting in the drive pipe support assemblies, slide the proper number of cable guide sleeves onto the pipe.
- ⑦ Attach pipes together with drive pipe splicers to obtain one long continuous run of drive (See Fig. 3).

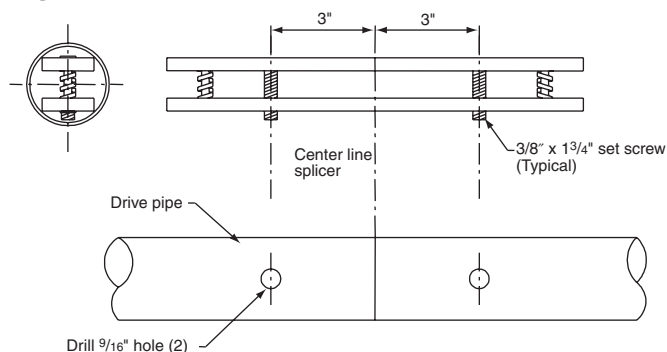


Figure 3

- ⑧ Drill drive pipe to secure to motor. Match up with pre-drilled holes in motor output and bolt as shown in Fig. 4.

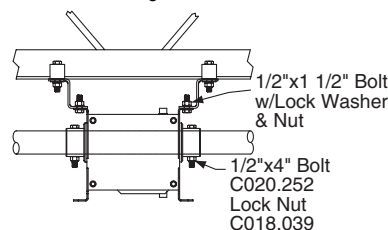


Figure 4

- ⑨ Operate the winch to determine that the drive pipe is rolling level. Make adjustments accordingly.
- ⑩ Slide the cable guide sleeves into their approximate location. Sleeves should be spaced approximately 2" apart at cable attachment locations.
- ⑪ Attach the wire rope cable to the cable guide sleeves and wrap cable around the drive pipe at least three revolutions in the same direction. Drop the loose end of the cable to the floor.

Please Note:

- The same number of pre-wraps must be maintained for all hoist lines.
- To increase the amount of line take-up on a given cable guide assembly, you must decrease the 2" dimension between the guides. To decrease the amount of take-up, increase the distance between cable guide flanges.
- Once the 3 pre-wraps are around the drive pipe, apply duct tape around cable. This will create a consistent groove for cable collection.

Frame and Net Assembly

- ① Lay out the 1 5/8" tubing, tees and elbows that make up the frame from which the net will hang, to make sure you have all the pieces.
- ② Assemble the frame.
- ③ Attach sling cables to frame, and the sling cables to the shackle. Clamp two sides together just below shackle to make sure sling cables cannot move on shackle. Both sides of sling cable must be of equal length. Attach the shackles to the cables hanging from the drive pipe.
- ④ Test the winch operation, then set limit switches (see "Limit Switch Adjustment" section on page 2). Set "Up" limit so that the shackles are about 6" below the drive pipe. Set the "Down" limit so the frame stops about 48" above the floor.
- ⑤ Attach net to frame using plastic wire ties (provided). Do not pull ties tight. If ties are tight they may break when struck by a ball.

Please Note: When the Practice Cage is not in use, the net should be folded onto the top of the cage to minimize the storage dimension. When using the net, the cage should be lowered to allow about 12" of netting to rest on the floor. One long side of the net has two zippered corners so it may be folded on top of the frame so users can drive golf balls into the net.

Wiring diagram, limit switch adjustment instructions and dimensional drawings on page 2

DRAPER

Caution

Operating the cage too far in either direction could cause severe damage to the unit.

Limit Switch Adjustment (see Fig. 5)

Please Note: One upper and one lower travel limit switch is provided. Proper adjustment is simple and quick with the following procedure. Always shut power off from the winch when working inside the electrical compartment. The cover has been designed for quick removal to simplify limit switch adjustment.

- 1 Run the winch in the "up" direction to raise the cage to the desired (fully raised) position—so shackles are about 6" below drive pipe—and stop it in this position. Turn off the power to the winch and remove the electrical compartment cover (2 screws).
- 2 Slacken the two thumb nuts holding the upper limit switch.
- 3 Slide the upper limit switch across until the blade contacts the limit trip rod, then slide it a little further until an audible click is heard as the switch opens. Tighten the thumb nuts. The top limit is now set.
- 4 Temporarily install the cover and run the practice cage down to the desired lower stop position—so the frame is about 4' above the finished floor—and set the lower limit switch in the same way.
- 5 Run the cage up and down again to check the settings
- 6 Make a final check to make sure that all fasteners are tight and the rope is tracking properly in the drum grooves before putting the winch into use.

Please Note: Fine adjustments of limit switches are easiest to make if only one thumbscrew is loosened and the switch is tilted to desired position.

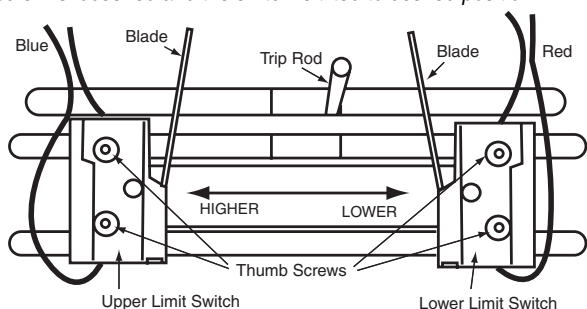
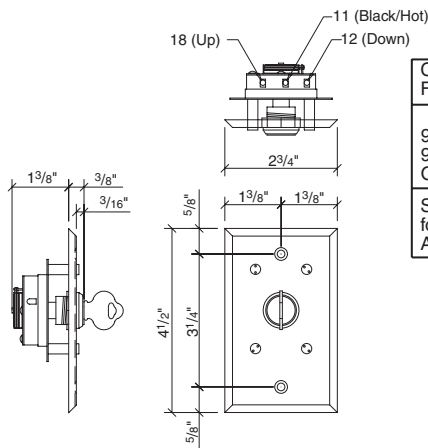
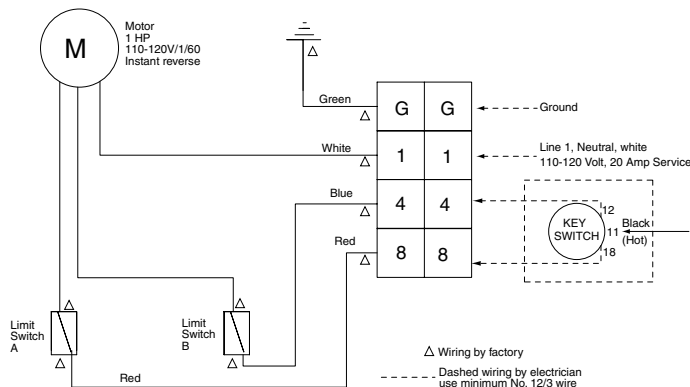


Figure 5

Wiring Diagram

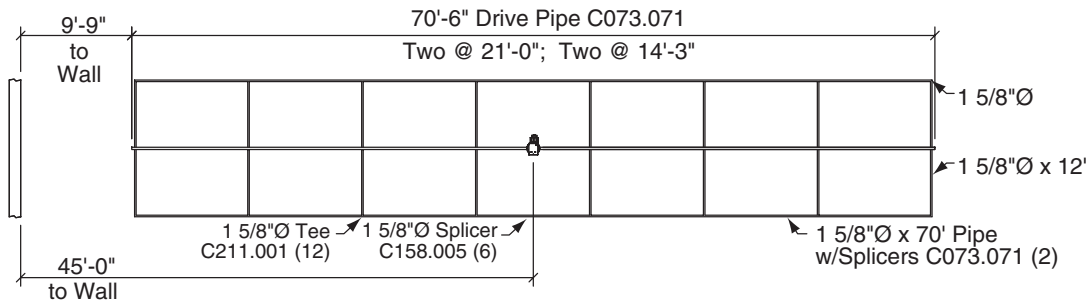


Circuit breaker rated amp. 20 amp.
Fused circuit rated amp. 20 amp.

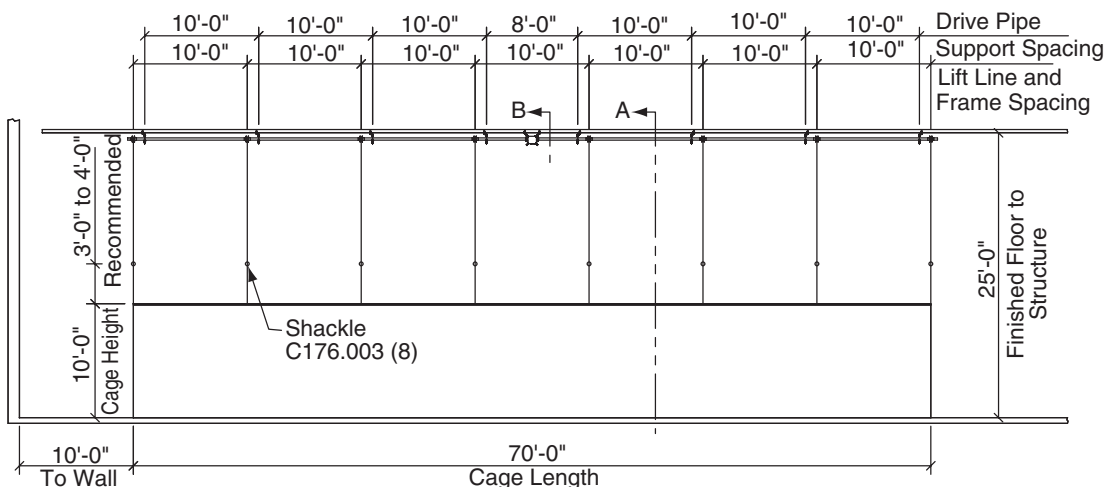
Minimum Wire Size
90' maximum run..... 12 ga.
90' to 140' run..... 10 ga.
Over 140'..... 8 ga.

Sizes of wall masonry boxes required for single and ganged key switches--
All boxes 2" (w) x 3 3/4" (h) x 2 1/2" (d).

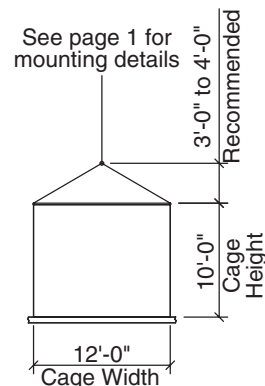
Practice Cage Dimensions and Details



Top View



Side View



End View