

Installation Instructions

Fold-Up Gym Divider by Draper

Caution

- ① Locate and identify all parts using the hardware list and the drawings. "As built" drawings and hardware list are packed in hardware carton. Do not discard with packing material.
 - ② DO NOT touch divider curtain while it is in motion.
 - ③ Key switch is packed in winch crate, do not discard.
 - ④ **Key switch or controls to be in full view of both sides of curtain during operation.**
 - ⑤ Divider operates on 110-120V, 60 Hz current (unless noted otherwise).
 - ⑥ Wiring diagram can be found inside winch limit cover panel.
 - ⑦ Instructions for attaching and wiring winch are packed in winch carton.
- NOTE:** Winch has been tested at the factory and found to be operating correctly prior to shipment.

These instructions are meant as a guide only. They do not bind Draper, Inc. in any way and do not imply any responsibility of Draper, Inc. for improper installation or faulty workmanship at the jobsite.

Hardware Installation

- ① Verify overall height and width with shop drawing to determine possible discrepancies.
- ② Attach winch support angles to winch plate and install winch per location shown on shop drawing.
- ③ Install drive pipe support assembly angles per location shown on shop drawing.
- ④ Attach drive pipe support assemblies to angles with threaded rod. Adjust assemblies vertically to proper height (See Fig. 1).

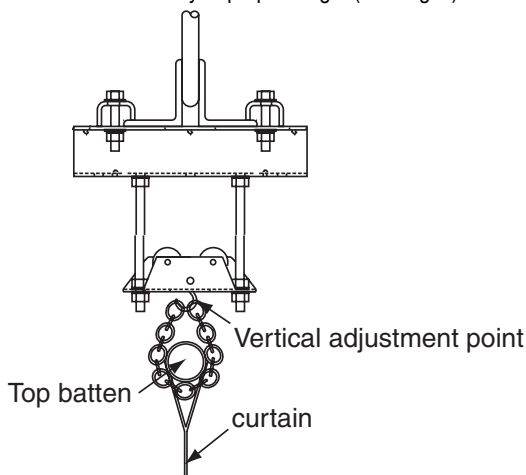


Figure 1

- ⑤ Using the project drawings, identify the 2⁵/₈" drive pipe section that attaches to the winch (normally the shortest section). Attach to winch by passing through output shafts, drilling and installing hardware as shown on drawings.
- ⑥ Raise the other drive pipe sections as indicated on project drawings. (Once the drive pipe is resting in the drive pipe support assemblies, slide the proper number of cable guide sleeves onto the pipe.)
- ⑦ Attach pipes together with drive pipe splicers to obtain one long continuous run of drive (See Fig. 2).
- ⑧ Operate the winch to determine that the drive pipe is rolling level. Make adjustments accordingly.
- ⑨ Slide the cable guide sleeves into their approximate location, which should correspond to the grommet spacings in the curtain.
- ⑩ Attach the wire rope cable to the cable guide sleeves and wrap cable around the drive pipe at least three revolutions in the same direction. Drop the loose end of the cable to the floor.

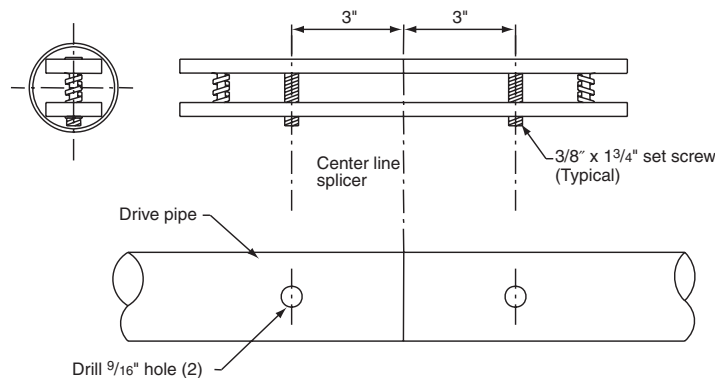


Figure 2

Curtain Installation

- ① Lay the curtain out with the top of the curtain close to the dangling wire rope cable.
- ② Slide 1⁵/₈" bottom batten tube into bottom pocket one section at a time, assembling as you go. Use 1³/₈" OD x 1'6" tube to connect sections of batten tube. Splice should be installed with so equal portions are inside each tube that is being connected. Install 5/16" x 1/4" setscrews in pre-drilled and tapped holes in batten tubes. Make sure outer tube sections are rotated to where the setscrews are in line prior to tightening (See Fig. 3).

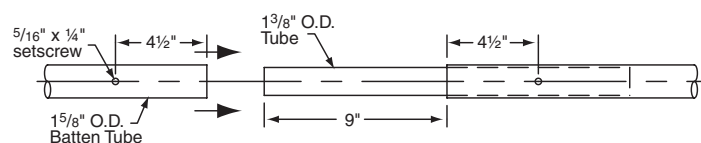


Figure 3

- ③ Make small cuts in the top pocket to attach the wire rope cable around the 1⁵/₈" pipe.
- ④ Operate the winch to raise the curtain into position.
- ⑤ Once raised to proper height, attach the chain from the drive pipe support assemblies around the top pipe and disconnect the wire rope cable. A small cut is required in the pocket for the chain.
- ⑥ Relocate cable guide sleeves and set distance (See Fig. 4).
- ⑦ Thread wire rope cable through grommets. Pull tight and attach around 1⁵/₈" pipe. Small cut required in pocket for wire rope cable.

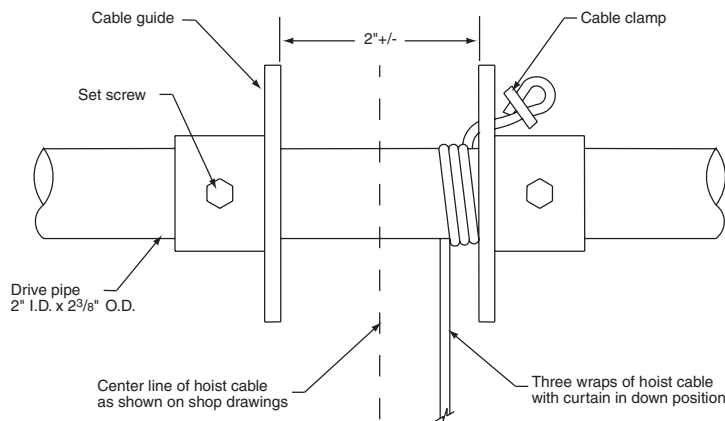


Figure 4

Caution

Operating the curtain too far in either direction could cause severe damage to the divider.

DRAPER®

411 S. Pearl St., Spiceland, IN 47385 USA ■ 765-987-7999
www.draperinc.com ■ fax 765-987-7142

Copyright © 2009 Draper Inc. Form Fold-Up-Divider_Inst09 Printed in U.S.A.

If you encounter any difficulties installing or servicing your Fold-Up Gym Divider, call your dealer or Draper, Inc., Spiceland, Ind., (765) 987-7999, or fax (765) 987-7142.

Adjustments

- 1 Operate curtain up to the stored position and set limit (see Fig. 5). Operate curtain to the down position and set limit.
- 2 Adjust spacing between cable guide sleeves to obtain a level lift of the curtain.
- 3 There are two basic vertical adjustments to this divider. One is the threaded rods attaching the drive pipe support assemblies to the drive pipe support angles. The other is the chain from the drive pipe support assembly to the top of the curtain (see Fig. 1).

Please Note:

- The same number of pre-wraps must be maintained for all hoist lines.
- To increase the amount of line take-up on a given cable guide assembly, you must decrease the 2" dimension between the guides. To decrease the amount of take-up, increase the distance between cable guide flanges.
- Once the 3 pre-wraps are around the drive pipe, apply duct tape around cable. This will create a consistent groove for cable collection.

Limit Switch Adjustment

Please Note: One upper and one lower travel limit switch is provided. Proper adjustment is simple and quick with the following procedure. Always shut power off from the winch when working inside the electrical compartment. The cover has been designed for quick removal to simplify limit switch adjustment.

- 1 Run the winch in the "up" direction to raise the divider curtain to the desired (fully raised) position and stop it in this position. Turn off the power to the winch and remove the electrical compartment cover (2 screws).
- 2 Slacken the two thumb nuts holding the upper limit switch.
- 3 Slide the upper limit switch across until the blade contacts the limit trip rod, then slide it a little further until an audible click is heard as the switch opens. Tighten the thumb nuts. The top limit is now set.
- 4 Temporarily install the cover and run the divider curtain down to the desired lower stop position and set the lower limit switch in the same way.
- 5 Run the divider up and down again to check the settings
- 6 Make a final check to make sure that all fasteners are tight.

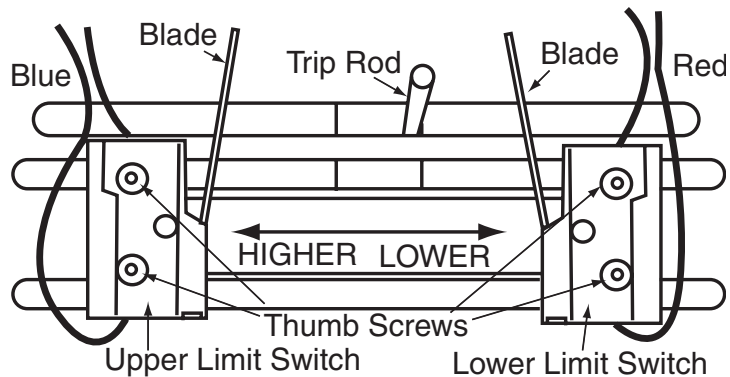


Figure 5

Secure curtain to pipe by either:

- 1) Self tapping screw with flat washer through weld zone and into pipe.
- 2) Use offset grommets to tie off curtain to pipe.

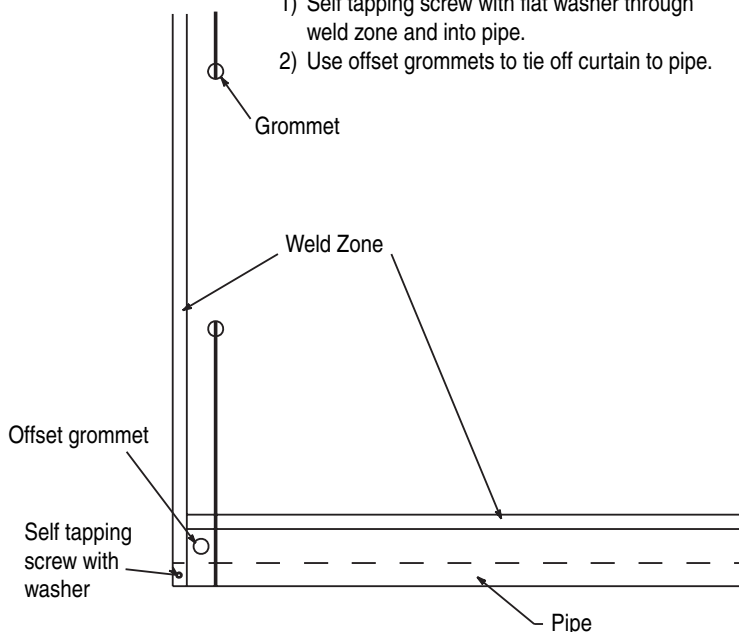


Figure 4

Wiring Diagram

