

SMS Flatscreen Mounts

SMS Flatscreen Mounts for Heavy Weight Displays

Wall Mounts

Whether you need an extremely low profile mount or one that swivels and rotates your display in all directions Draper's SMS Flatscreen Wall Mounts provide complete flexibility with stylish design. For displays 37" or greater and weights greater than 66 lbs.



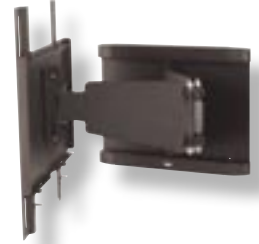
WH T
Stylish wall mount with aluminum construction. Back of display is $\frac{1}{8}$ " away from wall surface. Display can be tilted up to 10° . Universal bracket arms built into design. No additional bracket required or compatible. Silver finish. Display can't be mounted in vertical/portrait orientation.

WH T2 16-24
The WH T2 16-24 wall mount allows installation to both 16" and 24" (on center) studs. Back of display is only $\frac{1}{4}$ " away from wall surface. Display can be tilted up to 10° . Universal bracket arms built into design. No additional bracket required or compatible. Display can't be mounted in vertical/portrait orientation.

WH T2
This wall mount is designed to function with display specific brackets and displays which cannot use mounts WH T or WH T2 16-24. Also used for basic wall mount installations where mounting the display vertically or portrait orientation is desired. Bracket is not supplied with this mount. Must purchase appropriate bracket separately. H UNIVERSAL and display specific brackets are compatible with this mount.

WH ST
Articulating swivel wall mount extends plasma display up to approximately 24" from wall surface. Display can be tilted up to 10° . Holds one display of up to 165 lbs. Includes one H2 UNIVERSAL BRACKET.

WH 3D
Articulating swivel wall mount extends display up to 28" from wall surface or collapses to within 5" of wall surface. Display can be tilted 10° and rotated up to 90° side to side, depending on display size. 110 lb. capacity. Includes one H2 UNIVERSAL BRACKET.



WH ST 400
Wall mount allows display to be tilted up to 10° or rotated up to 20° side to side. Includes one H2 UNIVERSAL BRACKET.

WH ST 1150
Column wall mount. Longer column length allows multiple displays or shelves to be added. Includes one H2 UNIVERSAL BRACKET.

WFH ST 2000
Column mount attaches to wall and floor. Display can be tilted up to 10° or rotated up to 20° side to side. Display can be raised or lowered over the length of the column. Column length allows for multiple displays and shelves. Includes one H2 UNIVERSAL BRACKET. Excellent mounting solution if you are unsure of wall structure. Most of mount and flatscreen weight is distributed to the floor.

