

Hardware for FlexShades

Mounting Brackets—The standard mounting hardware supplied for wall, ceiling or jamb installation of Draper Motorized and Manual FlexShades. As an option for a pair of 1½” brackets, white bracket covers are available. If optional fascia or headbox are specified, then endcaps (not brackets) are supplied.

Fascia—Optional extruded fascia in square or radius styles hides hardware and roller. Available in clear anodized (standard), black, white, ivory, or charcoal bronze. 3¾” or 4½” high as required. Color samples are available.

Surface-Mounted Headbox—Complete extruded headbox is available to hide hardware and roller as an option for Motorized and Manual FlexShades. Two-piece assembly is suitable for surface mount to head, jamb or wall, in sizes 3¾” high or 4½” high as required.

Pocket-Style Headbox—Complete extruded headbox with endcaps is available for ceiling recessed installation. In sizes 3¾” high or 4½” high as required.

Type D Pocket—An extruded aluminum pocket for clean, ceiling flush installation. With bottom closure panel in place, only a narrow slot is visible. Aluminum pockets offer a convenient architectural solution for mounting either Motorized or Manual FlexShades at the curtain wall.

Installation of Type D Pocket in coordination with ceiling finishing allows for later installation of shades. Pockets are finished in white. FlexShades are installed using standard ceiling brackets.

Draper’s Type D Pocket cross-section dimensions are 4½” deep x 4¾” high. Comes in 12’ lengths. A tile-support flange along lower edge supports lay-in ceiling. Pre-welded corners and pocket ends are available. Endcaps optional. Add ¼” to overall case width if using endcaps.

Wall Clip with Closure—Pocket already exists? Specify FlexShade Wall Clip with a long or short closure. Wall Clip mounts to the wall and bottom closure panel drops neatly into place without fasteners, leaving a minimal slot through which the shade descends. For sleek appearance, use continuous wall clip. Closure sizes 1¾” or 3”.

Side Channel or “L” Angle—Side Channels or “L” Angles prevent direct light gaps at sides of shade fabrics. Side Channels are 1” deep x 2½” wide, and mount to the jamb or face of window opening. “L” Angles measure 1” x ¾” or 1” x 2¾” and mount inside the jamb.

Custom Powder coating—Custom powder coat paint colors available for most Draper hardware. Contact Draper for details. Powder coat provides an extremely durable, attractive finish.

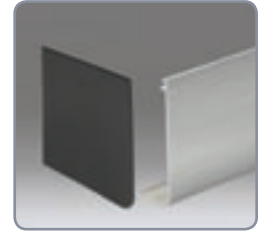
Clutch Brackets



Optional Covers for 1½” brackets

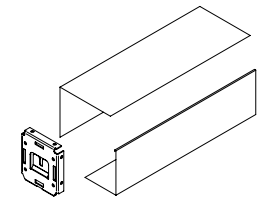
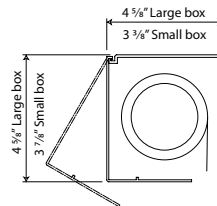


Endcaps for Fascia and Headbox

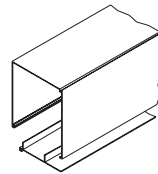


Printed colors may vary from actual aluminum.

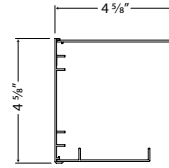
Surface-mounted Headbox is two piece plus endcaps.



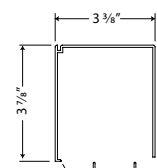
Pocket-Style Headbox



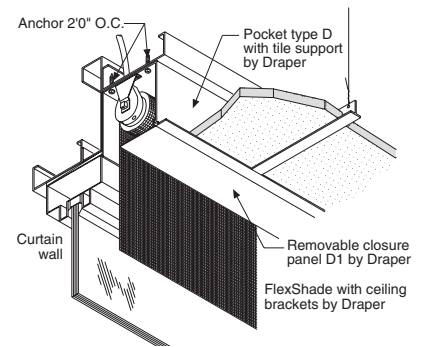
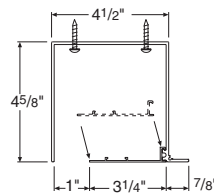
Large Pocket Headbox



Small Pocket Headbox



Type D Pocket



Side Channel or “L” Angle

Wall Clip with Closure

