

EZ Fold[®] A0021

Official 72" x 48" Rectangular Wood Basketball Backboard

by DRAPER

Specifications—EZ Fold A0021 Official 72" x 48" Rectangular Wood Basketball Backboard

Product Description

Backboard shall be official size 72" x 48" x 1½" in thickness.

Backboard shall be a solid core 55 lb./c.f. density industrial grade particleboard, complying with ANSI/A208.1-1979 Type 1, Grade 1-M-3. Front and back faces of backboard shall have 1/32" thick layer of melamine and/or phenolic resin impregnated alpha allulose and kraft papers thermally fused under intense heat and pressure which shall be fused to particleboard core to produce a smooth satin finish.

Edges of backboard shall be shaped on four sides and corners to a 3/16" radius and sealed with a durable white lacquer finish.

Face of backboard shall be white with silk screened official orange perimeter and target area markings.

Backboard shall be supplied with heavy-duty steel brackets to mount to rear of bank to allow mounting to all standard indoor ceiling or wall suspended backstop structures.

Backboard net weight shall be 155 lbs.

Factory drilled goal mounting holes (4) shall be standard 5" (horizontal) x 5" (vertical) mounting centers. Use Draper, Inc. No. A0576 Breakaway Goal, No. A0581 Breakaway Goal with Tube Tie Attachment, A0570 Standard Goal or No. A0572 Heavy Duty Goal.

Lifetime Limited Warranty

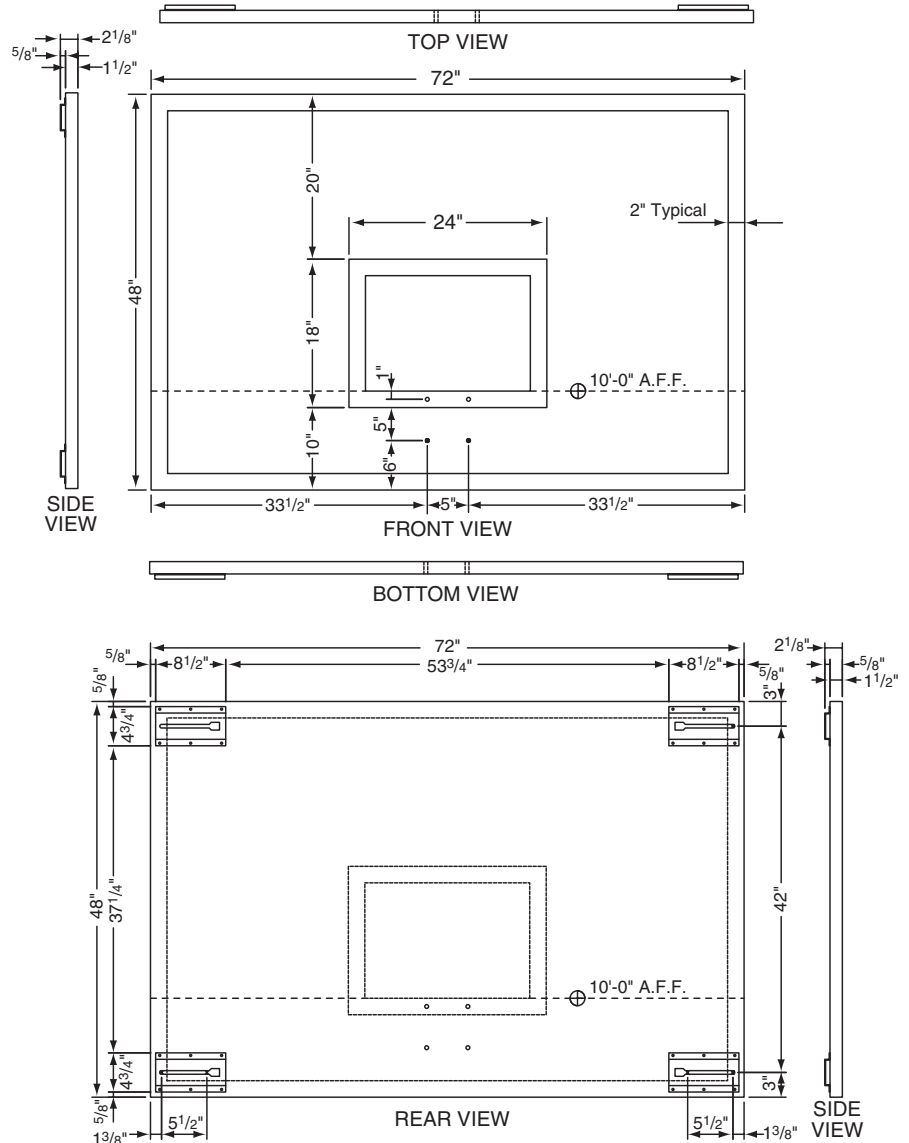
Backboard shall be covered by a Limited Lifetime Warranty when installed on a Draper EZ Fold basketball backstop with Goal Brace or Direct Mount Height Adjuster. Contact Draper to request full warranty text.

Optional 503264 Backboard Safety Padding

Padding to protect bottom and 15" up each side of the backboard to meet all NCAA, NFSHSA and professional requirements.

Padding of a durable neutral gray, open cell foam material providing full 2" thickness from the bottom and sides of backboard frame. Front and back surfaces of backboard frame shall be further protected by a 1" thick lip extending ¾" up from bottom and sides of backboard. Padding shall be permanently secured to the backboard frame by an easily applied high strength glue. Glue and brush provided.

For use with all rectangular shaped wood, fiberglass, steel and aluminum backboards.



DRAPER

411 S. Pearl St., Spiceland, IN 47385 USA ■ 765-987-7999
www.draperinc.com ■ fax 765-987-7142

Copyright © 2007 Draper Inc. Form EZ-A0021_Sub07 Printed in U.S.A.

PROJECT: _____

ARCHITECT: _____

CONTRACTOR: _____

SUPPLIER: _____

DATE: _____ REVISED: _____