

# EZ Fold<sup>®</sup> 503154

Official 72" x 48" Rectangular  
Steel Basketball Backboard

by DRAPER

**Specifications—EZ Fold 503154**  
Official 72" x 48" Rectangular Steel  
Basketball Backboard

**Product Description**

Backboard shall be 72" x 48", constructed of a single piece of 12-gauge steel reinforced with four 12 gauge horizontal channel sections, and one heavy 10 gauge vertical channel. The shell shall have a 1½" deep flange.

All reinforced sections shall be welded to the main outer shell and to each other to make a single, vibration-free unit.

Mounting keyhole type slots shall be positioned in center of horizontal reinforced channels located on 20" vertical and 35" horizontal centers (standard fan shaped backboard mounting).

Goal mounting holes (4) shall pass directly through heavy vertical reinforced channel for added goal strength and shall be on standard 5" (horizontal) x 5" (vertical) mounting centers.

Backboard net weight shall be 150 lbs.

**Lifetime Limited Warranty**

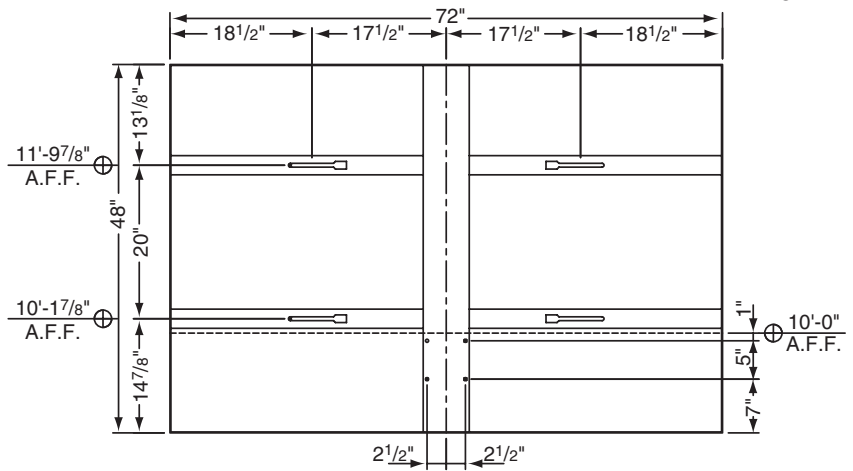
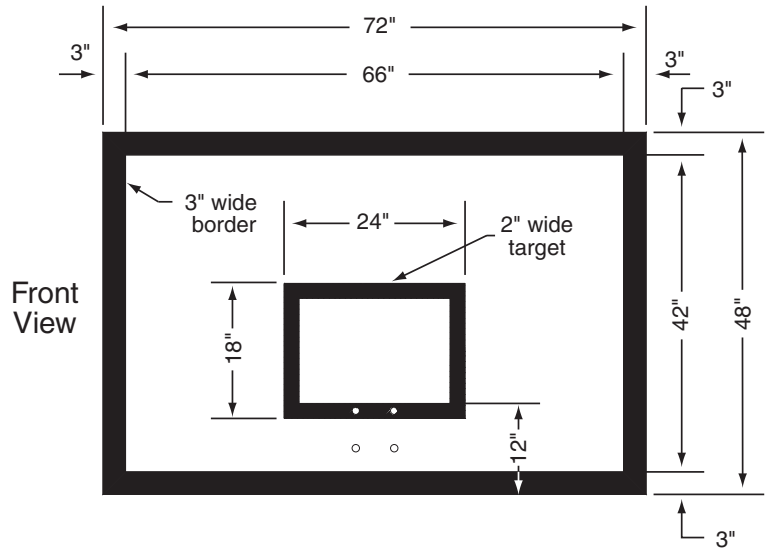
Backboard shall be covered by a Limited Lifetime Warranty when installed on a Draper EZ Fold basketball backstop with Goal Brace. Contact Draper to request full warranty text.

**Optional 503264 Backboard Safety Padding**

Padding to protect bottom and 15" up each side of the backboard to meet all NCAA, NFSA and professional requirements.

Padding of a durable neutral gray, open cell foam material providing full 2" thickness from the bottom and sides of backboard frame. Front and back surfaces of backboard frame shall be further protected by a 1" thick lip extending ¾" up from bottom and sides of backboard. Padding shall be permanently secured to the backboard frame by an easily applied high strength glue. Glue and brush provided.

For use with all rectangular shaped wood, fiberglass, steel and aluminum backboards.



DRAPER<sup>®</sup>

411 S. Pearl St., Spiceland, IN 47385 USA ■ 765-987-7999  
www.draperinc.com ■ fax 765-987-7142  
Copyright © 2010 Draper Inc. Form EZ-503154\_Sub10 Printed in U.S.A.

PROJECT: \_\_\_\_\_

ARCHITECT: \_\_\_\_\_

CONTRACTOR: \_\_\_\_\_

SUPPLIER: \_\_\_\_\_

DATE: \_\_\_\_\_ REVISED: \_\_\_\_\_