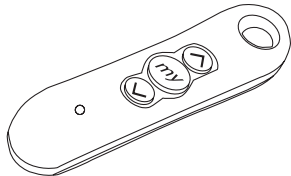


# Programming Instructions

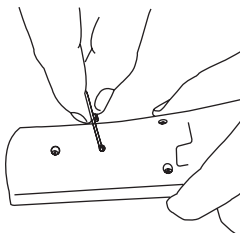
## Radio Frequency Remote Control Motor by Draper

**Please Note: When you receive a radio frequency remote control motor from Draper, Inc., the motor has no programming on it so it must be learned and programmed to work on the transmitter that you have at the job. Here are the initial programming instructions.**

- 1 Connect power to one motor. Select the transmitter/channel to which you plan to learn the motor. Press and hold the UP and DOWN buttons at the same time until the motor jogs, then release.
- 2 Check the motor run direction by press either the UP or DOWN buttons. This is important because if you do step 3 without doing this step, then you will need to reset the motor. If you need to reverse the motor direction, then press the STOP button (middle button which might be labeled MY) for five seconds until the motor jogs. Check the direction again to make sure that it works.



- 3 Move the motor to its upper limit position. Press the STOP and DOWN buttons at the same time until the motor starts to move down, then release. You will stop the motor at its lower limit. You can use the UP and DOWN buttons to adjust the motor to the correct lower limit position if need be.
- 4 Once the motor is at its lower limit position, then press the UP and STOP buttons at the same time until the motor starts to move up, then release. The motor should move to the upper limit position in step 3 and stop.
- 5 Once the motor has stopped at its upper limit position, then press and hold the STOP button for five seconds until the motor jogs.
- 6 Now, you must put the motor into USER mode. Find the programming button, which is a small button on the back or side of the transmitter and press it until the motor jogs. Once you have done this, then the motor will operate in normal fashion.



- 7 Disconnect power to this motor and move to the next in your installation and start with step 1. Reconnect motor to power when all motors are programmed.

### Reset Motor Instructions

If the motor is not working or responding correctly and you want to reprogram it from the beginning and clear all previous programming, then follow these steps.

- 1 Disconnect the motor from power for two to five seconds, reconnect to power for 10-13 seconds, disconnect from power for two to five seconds, and reconnect to power. The motor should move down a little after you reconnect to power the last time.
- 2 You will then need to find the programming button which is a small button

on the back or side of the transmitter. You will need to depress the button for 10-15 seconds. The motor should jog up and down once then pause and jog a second time during this time period. Once the motor has completed its second jog, then you can start at step 1 of initial programming as the motor is clear.

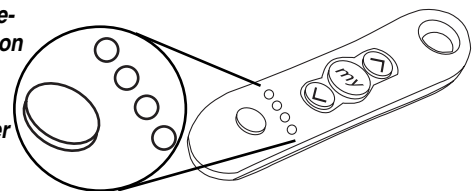
### Setting an Intermediate Stop

This is done once the shade is in USER mode from the initial programming at top.

- 1 Move the motor to the mid-point location that you want the stop located.
- 2 Press and hold the STOP button until the motor jogs.
- 3 Now, if you hit the STOP button when the motor is standing still, it will move to that intermediate location.
- 4 If you want to delete the stop, then go to the intermediate stop and press and hold the STOP button until the motor jogs.

### Add/Delete a Channel/Transmitter

Channel selector button on Multi-Channel Transmitter



#### To add a channel/transmitter:

- 1 Select the channel/transmitter that is currently operating the motor, then press the programming button until the motor jogs.
- 2 Select the new channel/transmitter that you want to add to the motor, then press the programming button until the motor jogs.
- 3 The motor should now work on both the old and new channel/transmitter.

#### To delete a channel/transmitter:

- 1 Select the channel/transmitter that is currently operating the motor and you want to keep, then press and hold the programming button until the motor jogs.
- 2 Select the channel/transmitter that you want to remove, then press and hold the programming button until the motor jogs.
- 3 The motor should now only work on the channel/transmitter on step 1.

### Adjust Limits in User Mode

If your initial limits have changed or you want to fine tune a motor, you do not need to reset the motor and re-program it. You can just change the limits with these steps.

- 1 Move the motor to the limit (upper or lower) that you want to change.
- 2 Press and hold the UP and DOWN buttons until the motor jogs.
- 3 Move the motor to its new limit location.
- 4 Press and hold the STOP button until the shade jogs.

**Please Note: These instructions are different for battery powered, low voltage and Intelligent motors with radio technology.**

# DRAPER

411 S. Pearl St., Spiceland, IN 47385 USA ■ 765-987-7999

www.draperinc.com ■ fax 765-987-7142

Copyright © 2007 Draper Inc. Form RFRM\_Motor\_ProgInst07

Printed in U.S.A.

If you encounter any difficulties programming your RF Remote Control Motor, call your dealer or Draper, Inc., Spiceland, Ind., (765) 987-7999, or fax (765) 987-7142.