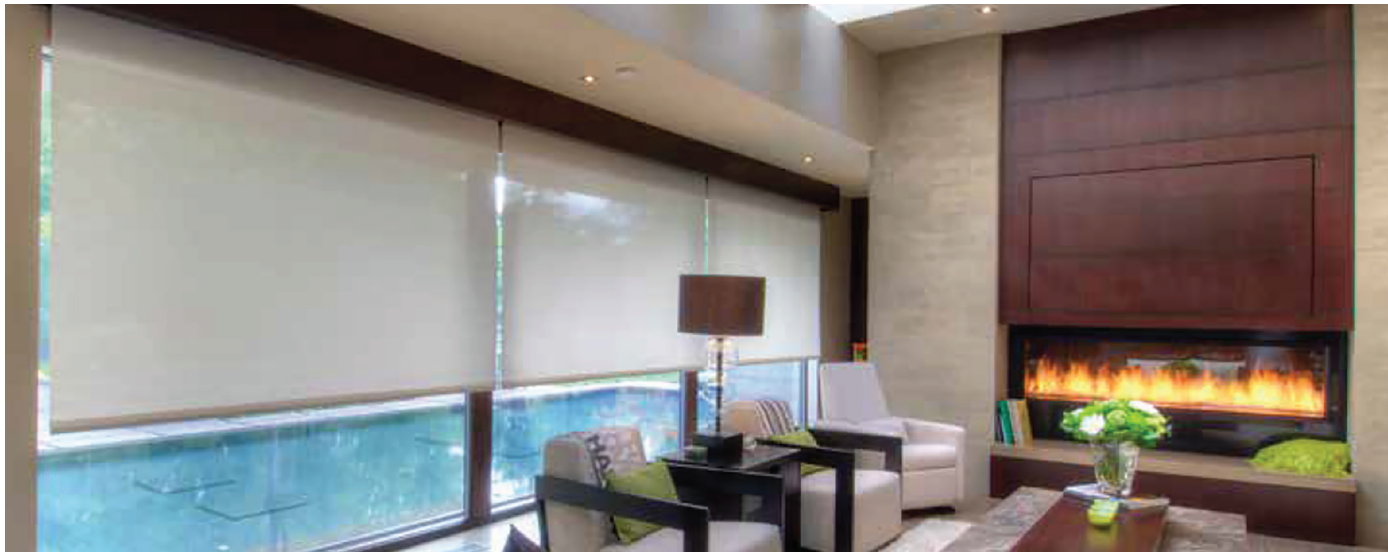


MOTORIZED FlexShade® RTS AC

3-WIRE MOTOR FEATURING PARALLEL WIRING



Private Residence, London, Ontario, CAN., Dealer: London Audio, London, Ontario, CAN,
Photography: Don Pye, Studio Rockwood, Ontario, CAN

- The Motorized FlexShade® RTS AC window shade offers a 3-wire motor that features parallel wiring, electronic programmable limits, and a multitude of control options. With a hand-held remote control and Plug & Play options, this easily programmable shade is the ideal choice for the office, boardroom, small commercial settings, residential, and church applications.

FEATURES

- Shades can be coupled to reduce the number of motors required.
- Secure moisture resistant connection to line voltage using M12 Connector or Plug & Play option using three-prong NEMA plug.
- Motors can be parallel wired (daisy chained).
- Wireless wall switches available in 1, 2, 3, 4, or 5 channels. Handheld remotes are available in 1, 4, or 16 channels.
- Serial and dry contact interfaces available.
- Recess mount hardware includes pocket headbox or Pocket D headbox with tile lip. Where a pocket already exists a wall clip and closure are available with or without a tile lip.
- Compatible with U, H, and L channels for light-gap reduction.
- Dual roller hardware components include: Dual Roller Endcaps, Dual Roller Fascia, and Dual Roller Pocket Headbox. Options may vary by product type. See technical documents for details.
- Product designed for interior use.
- UL listed. Dual motorized units are UL listed.

– OPTIONS

- Optional sun sensor or timer with on-screen display.
- Optional App control is available.
- Multiple hardware options for surface mounting, including brackets (standard), fascia with endcaps, or headbox with closure.
- Hardware finish choices: clear anodized (standard), black, white, ivory, or charcoal bronze. Custom powder coat colors available.
- Optional dual rollers available upon request.
- Dual Roller Fascia finish choices: clear anodized (standard), black, white, ivory, or charcoal bronze. Custom powder coat colors available.
- Dual Roller Pocket Headbox finish choices: grey inside/white outside or white inside/grey outside with a white wall clip.



CHILD SAFETY NOTICE

This product is Certified Best for Kids™ by the Window Covering Safety Council.

SIZES

- Available in sizes from 29 ½" to 168" (75 cm to 427 cm) wide, depending on fabric selection.
- Larger sizes available with FlexShade® 2 or Colossal FlexShade®.

FABRIC OPTIONS

draperinc.com/windowshades/fabricoptions.aspx

WARRANTY

draperinc.com/warranty.aspx

SUPPORTING DOCUMENTS

All instructions, technical drawings and other supporting documents are located at: draperinc.com/documents.aspx

For more information on this product visit:

draperinc.com/windowshades/motorizedshades.aspx

