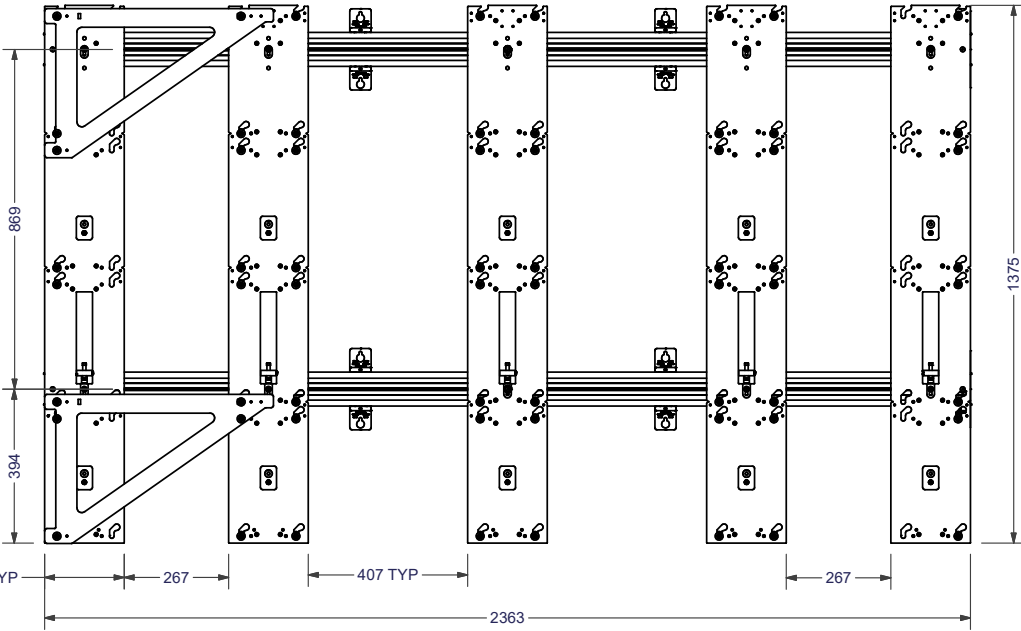


4

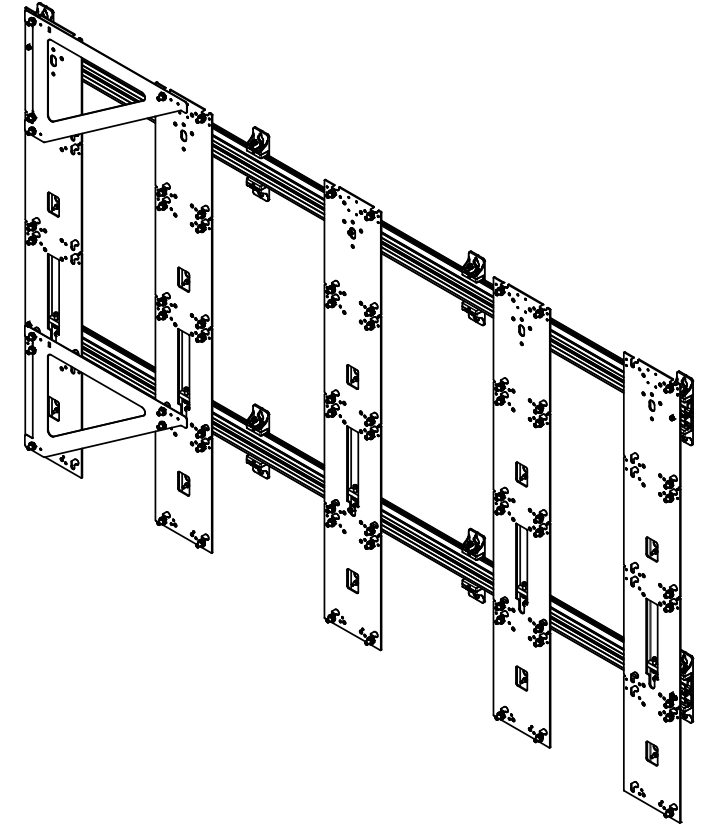
3

2

1



FRAME ONLY





NOTES:
 1. FRAME WEIGHT = 49 kg (108 lbs)

Machining Tolerances (mm)	
0 < L ≤ 6	± 0.1
6 < L ≤ 30	± 0.2
30 < L ≤ 120	± 0.3
120 < L ≤ 400	± 0.5
400 < L ≤ 1000	± 0.8
1000 < L ≤ 2000	± 1.2
2000 < L ≤ 4000	± 2

UNITS IN MILLIMETERS

PROPRIETARY DRAWING NOTICE: THIS DOCUMENT CONTAINS CONFIDENTIAL, PROPRIETARY INFORMATION OF DRAPER, INC., IS THE PROPERTY OF DRAPER, INC., AND MUST BE RETURNED UPON REQUEST. NEITHER RECEIPT NOR POSSESSION THEREOF CONFERS ANY RIGHT TO OWN, REPRODUCE, USE, OR DISCLOSE IN WHOLE OR IN PART, ANY SUCH INFORMATION WITHOUT WRITTEN AUTHORIZATION FROM DRAPER, INC.

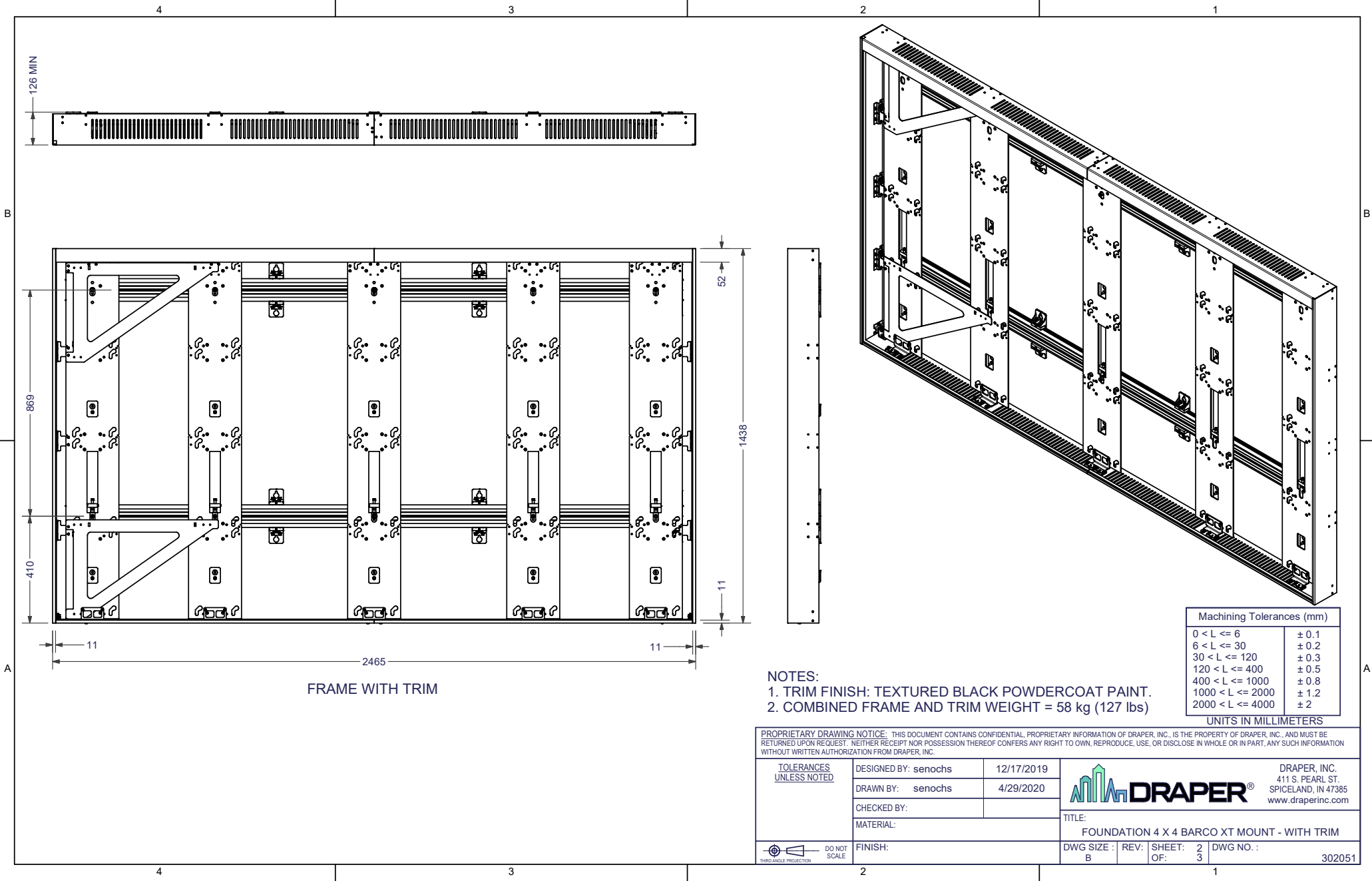
TOLERANCES UNLESS NOTED	DESIGNED BY: senochs	12/17/2019	 DRAPER, INC. 411 S. PEARL ST. SPICELAND, IN 47385 www.draperinc.com
	DRAWN BY: senochs	4/29/2020	
	CHECKED BY:		
	MATERIAL:		
 DO NOT SCALE	FINISH:		TITLE: FOUNDATION 4 X 4 BARCO XT MOUNT - WITHOUT TRIM
	DWG SIZE : B	REV: OF:	SHEET: 1 OF: 3

4

3

2

1





FRAME WITH TRIM

- NOTES:
 1. TRIM FINISH: TEXTURED BLACK POWDERCOAT PAINT.
 2. COMBINED FRAME AND TRIM WEIGHT = 58 kg (127 lbs)

Machining Tolerances (mm)	
0 < L ≤ 6	± 0.1
6 < L ≤ 30	± 0.2
30 < L ≤ 120	± 0.3
120 < L ≤ 400	± 0.5
400 < L ≤ 1000	± 0.8
1000 < L ≤ 2000	± 1.2
2000 < L ≤ 4000	± 2

UNITS IN MILLIMETERS

PROPRIETARY DRAWING NOTICE: THIS DOCUMENT CONTAINS CONFIDENTIAL, PROPRIETARY INFORMATION OF DRAPER, INC., IS THE PROPERTY OF DRAPER, INC., AND MUST BE RETURNED UPON REQUEST. NEITHER RECEIPT NOR POSSESSION THEREOF CONFERS ANY RIGHT TO OWN, REPRODUCE, USE, OR DISCLOSE IN WHOLE OR IN PART, ANY SUCH INFORMATION WITHOUT WRITTEN AUTHORIZATION FROM DRAPER, INC.

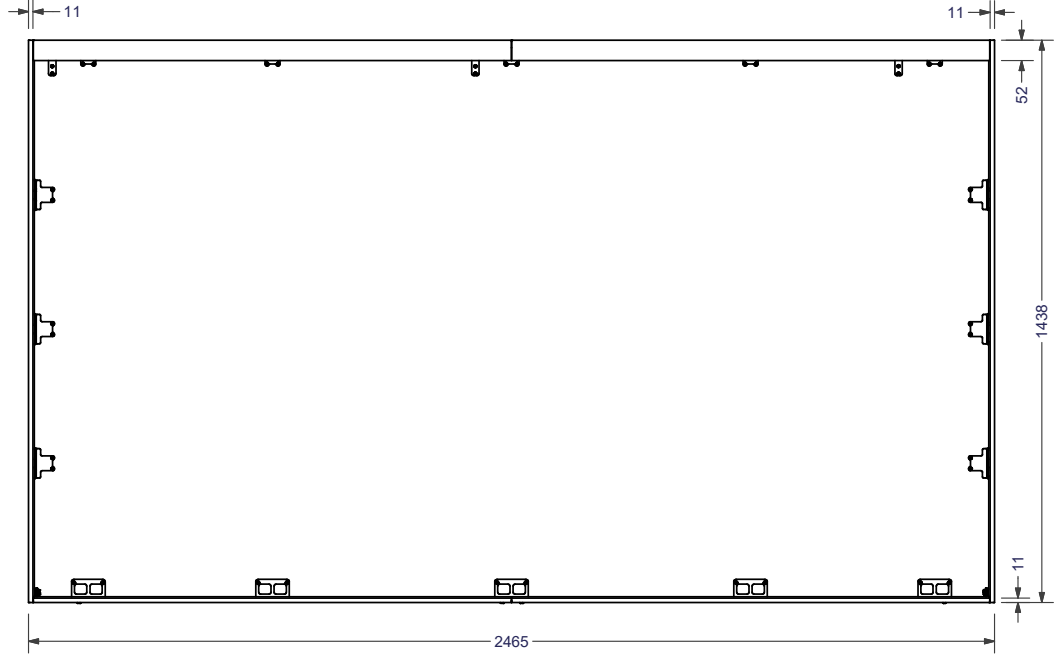
TOLERANCES UNLESS NOTED	DESIGNED BY: senochs	12/17/2019	 DRAPER, INC. 411 S. PEARL ST. SPICELAND, IN 47385 www.draperinc.com
	DRAWN BY: senochs	4/29/2020	
	CHECKED BY:		
	MATERIAL:		
 DO NOT SCALE	FINISH:	TITLE: FOUNDATION 4 X 4 BARCO XT MOUNT - WITH TRIM	
		DWG SIZE : B REV: OF: 2 / 3	SHEET: 2 OF: 3

4

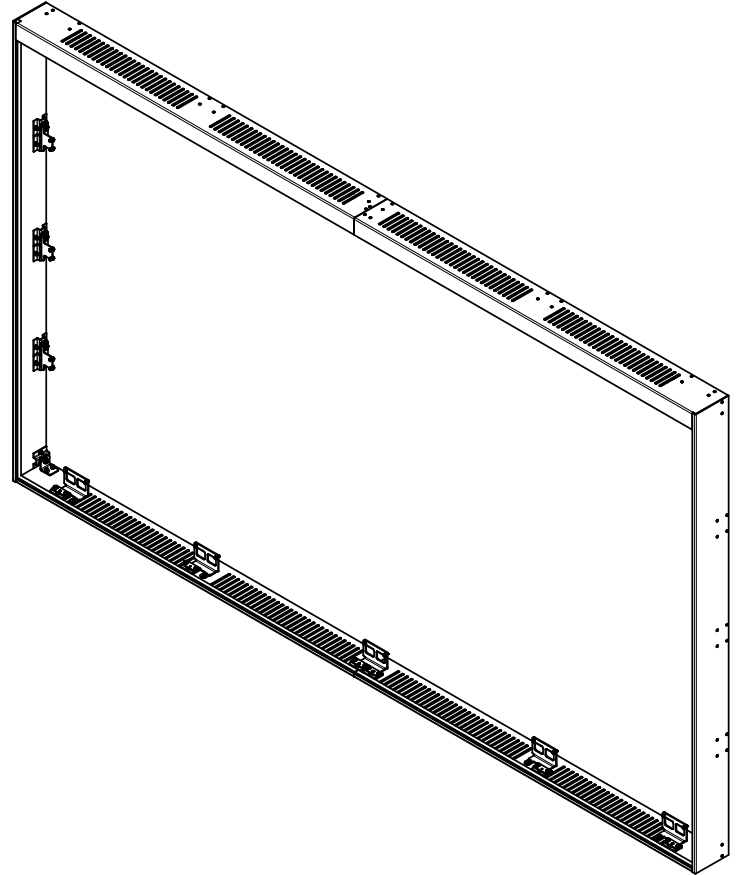
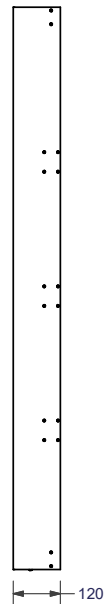
3

2

1



TRIM ONLY



Machining Tolerances (mm)	
0 < L ≤ 6	± 0.1
6 < L ≤ 30	± 0.2
30 < L ≤ 120	± 0.3
120 < L ≤ 400	± 0.5
400 < L ≤ 1000	± 0.8
1000 < L ≤ 2000	± 1.2
2000 < L ≤ 4000	± 2

UNITS IN MILLIMETERS

- NOTES:
1. TRIM WEIGHT = 9 kg (19 lbs)

PROPRIETARY DRAWING NOTICE: THIS DOCUMENT CONTAINS CONFIDENTIAL, PROPRIETARY INFORMATION OF DRAPER, INC., IS THE PROPERTY OF DRAPER, INC., AND MUST BE RETURNED UPON REQUEST. NEITHER RECEIPT NOR POSSESSION THEREOF CONFERS ANY RIGHT TO OWN, REPRODUCE, USE, OR DISCLOSE IN WHOLE OR IN PART, ANY SUCH INFORMATION WITHOUT WRITTEN AUTHORIZATION FROM DRAPER, INC.

<p>TOLERANCES UNLESS NOTED</p> <p>DO NOT SCALE</p>	DESIGNED BY: senochs	12/17/2019	<p>DRAPER, INC. 411 S. PEARL ST. SPICELAND, IN 47385 www.draperinc.com</p>
	DRAWN BY: senochs	4/29/2020	
	CHECKED BY:		
	MATERIAL:		
TITLE: FOUNDATION 4 X 4 BARCO XT MOUNT - TRIM ONLY			
FINISH:	DWG SIZE : B	REV: OF:	SHEET: 3 OF: 3
			DWG NO. :

4

3

2

1

B

A

B

A