

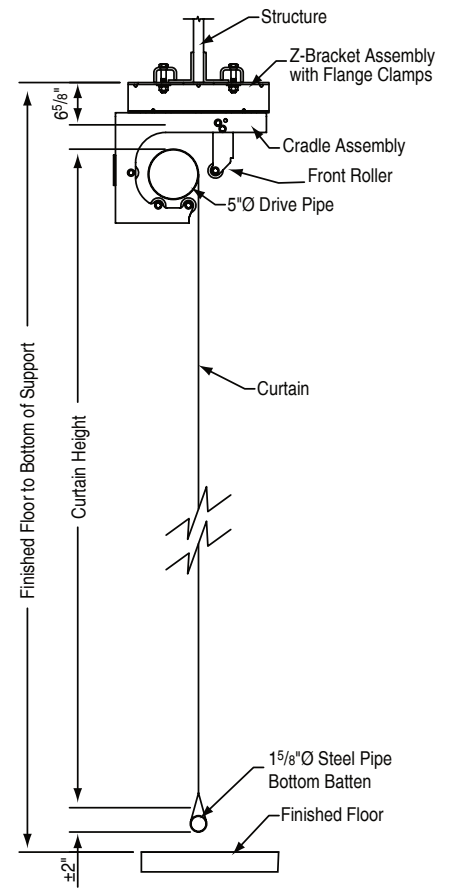
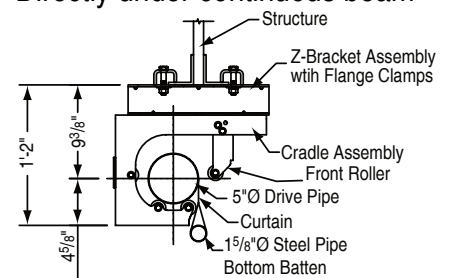
GYM DIVIDER CURTAINS TOP-ROLL

ROLLER ACTION, ROLLS FROM TOP, IDEAL FOR LOW-ATTACHMENT HEIGHTS



Section Drawing

Directly under continuous beam



- The Top-Roll Gym Divider Curtains store tighter than many other curtain designs making it ideal for very low-attachment heights under 18' (5.4 m). The clean design does not require belts, cables, or complicated torsion arms to operate curtain. For curtains up to 100' (30.48 m) wide, the Top-Roll utilizes a single ¼-hp motor located externally at one end of the drive shaft which simplifies the wiring diagram and saves money. Available in either all solid vinyl, vinyl coated polyester mesh, or a combination of mesh on the top and solid on the bottom.

FEATURES:

- Must be square or rectangular shaped.
- Outer edges welded to prevent fraying.
- Electrical connections are made at and stay at ceiling level.
- Motor is mounted externally allowing it to cool properly.
- Includes electric winch.

WEIGHTS/MEASUREMENTS:

- Total hanging weight is approximately ¼ lb per ft² (3.66 kg/m²).
- Minimum clearance of 6" (152 mm) required between vertical edges and adjoining curtain or fixed objects.
- Recommend 3' (91.4 cm) to allow egress at curtain ends.
- Stacking dimension is approximately 14" (35.6 cm).

SUPPORTING DOCUMENTS

All instructions, technical drawings and other supporting documents are located at: draperinc.com/documents.aspx

For more information on this product visit: draperinc.com/gymequipment/gymdividers.aspx