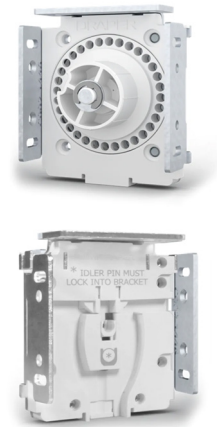


# MANUAL Clutch-Operated FlexShade® NEXD

READY FOR INSTALLATION



Residential installation. Installer: Lakeview Shade & Screen, Richmond, IN.  
Product: FlexShade NEXD. Fabric: Mermet Deco 3% in Tumbleweed and Flagstone colors.



- Easy to use and operate, the Clutch-Operated FlexShade® NEXD window shade offers a stylish way to change the look of indoor spaces without the use of automation. NEXD provides light control with a bead chain clutch. With its hassle-free, maintenance-free clutch, and fine leveling adjustments, the Clutch-Operated FlexShade NEXD offers a long-lasting solution for residential, commercial, healthcare, institutional, and educational settings.

## FEATURES

- Comes with mounting endcaps (standard). Optional fascia with endcaps, surface mounted headbox, or pocket mounted headbox available. Type D Pocket available as an accessory.
- Clutch available in white (standard) or black. Clutch has a single groove for easy alignment of the roller with the idler endcap.
- Steel mounting endcap with integrated NEXD Clutch.
- Height-adjustable idler endcap for fine leveling adjustments after installation.
- Pre-drilled jamb mounting holes.
- Product designed for interior use.

## OPTIONS

- Optional dual rollers available upon request.
- Hardware finish choices: clear anodized (standard), black, white, ivory, or charcoal bronze. Custom powder coat colors available.
- Stainless steel bead chain (standard). Polyester chain available in white, black, brown, grey, or ivory at no extra charge. Bead chain clutch operator mounted right- (standard) or left-hand operation.
- Adhesive attachment available upon request in place of spline attachment (standard).

## CHILD SAFETY NOTICE:

To comply with ANSI/WCMA A100.1-2022 Child Safety Standard, this product ships with a tensioning device attached to the bead chain. Incorrect installation partially disables the product.

## SIZES

- Maximum width for product exceeds 144" (366 cm), depending on fabric selection.
- Available in 3 hardware sizes: slim, small, and large. Where slim and small are available in the same size, small will be the default choice. The slim version offers a fully assembled cassette-style system with a 3 3/8" (86 mm) profile.

## FABRIC OPTIONS

[draperinc.com/windowshades/fabricoptions.aspx](https://draperinc.com/windowshades/fabricoptions.aspx)

## WARRANTY

[draperinc.com/warranty.aspx](https://draperinc.com/warranty.aspx)

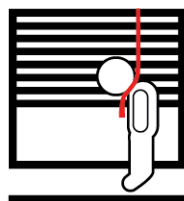
## SUPPORTING DOCUMENTS

All instructions, technical drawings and other supporting documents are located at: [draperinc.com/documents.aspx](https://draperinc.com/documents.aspx)

For more information on this product visit: [draperinc.com/windowshades/manualshades.aspx](https://draperinc.com/windowshades/manualshades.aspx)

 **WARNING**

 **ADVERTENCIA**



## Window Blind Cord Strangulation Risk

Window blinds with a damaged or loose tension device or retractable cord that fails to fully retract pose a strangulation risk to children. To avoid this potential strangulation risk, consider purchasing cordless products or products with inaccessible cords.